



OXFORD COLLEGE

OF EMORY UNIVERSITY

1995-1996
CATALOG

Contents

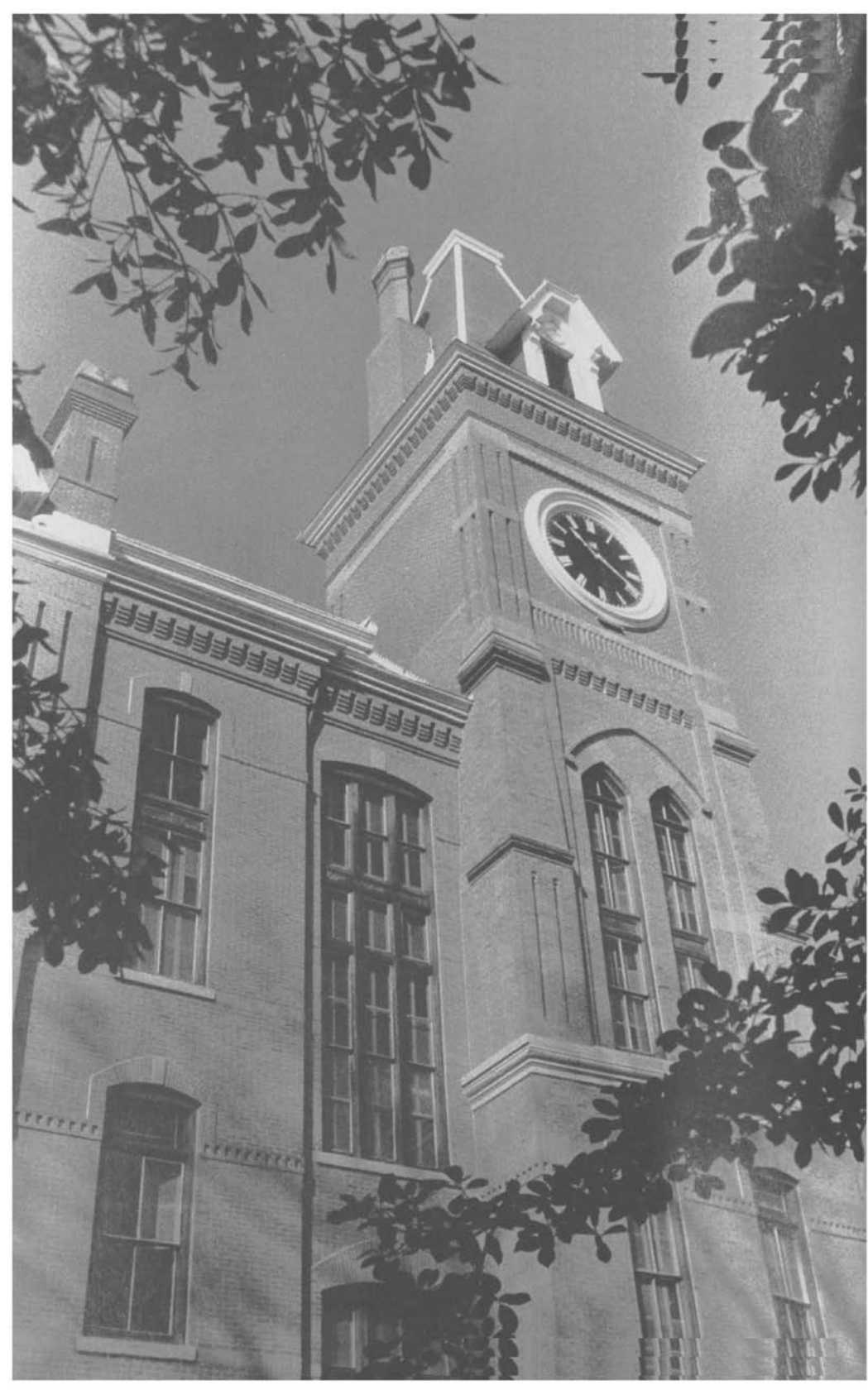
Oxford College Profile	3
Admission	7
Financial Information	11
Academic Programs	21
Educational Resources	29
Regulations	31
Course Descriptions	47
Trustees, Administration, and Faculty	71
Academic Calendar	80
Index	86

©1995 Emory University
Photographs by Annemarie Poyo

Emory University does not discriminate in admissions, educational programs, or employment on the basis of race, color, religion, sex, sexual orientation, national origin, age, disability, or veteran's status and prohibits such discrimination by its students, faculty, and staff. Students, faculty, and staff are assured of participation in university programs and in use of facilities without such discrimination. The university also complies with all applicable federal and Georgia statutes and regulations prohibiting unlawful discrimination. All members of the student body, faculty, and staff are expected to assist in making this policy valid in fact. Any inquiries regarding this policy should be directed to the Emory University Office of Equal Opportunity Programs, Administration Building, Atlanta, Georgia 30322. Telephone: 404/727-6016 (V/TTY).

If you are a person with a disability and wish to acquire this publication in an alternative format, please contact Ann Cargile, Records and Registration, Seney Hall, Oxford College, Oxford, Georgia 30267. Telephone: 404/784-8306.

The university reserves the right to revise programs, information, requirements, regulations, or financial charges at any time. Whenever changes occur, an effort will be made to notify persons who may be affected.



Oxford College Profile

Oxford College is a two-year, coeducational, liberal arts division of Emory University, with an enrollment of between 550 and 600 students. Located in Oxford, Georgia, on the original Emory campus, Oxford College is thirty-eight miles from Emory's Atlanta campus.

As a division of Emory University, Oxford College maintains high academic standards. While offering its students the advantages of a large, modern university, Oxford College is itself a small institution that provides optimal class size, a strong academic advising program, and extensive opportunities for student involvement and leadership.

Accreditation

Oxford College is accredited by the Southern Association of Colleges and Schools and by the University Senate of the United Methodist Church.

Program of Study

The associate of arts degree is offered at Oxford. Oxford students who complete the uniform requirements (*see page 25*) plus elective courses for a total of sixty-eight semester hours, and do so with at least a C average, are automatically eligible to enter the junior class of Emory College.

Mission

Oxford College is dedicated to the goal of excellence in undergraduate liberal arts education. The college endorses the human and academic values inherent in the liberal arts tradition and—as an institution affiliated with the Methodist Church—the moral and ethical values of the Judeo-Christian tradition. Oxford's administrators, faculty, and staff—who are responsible for the character of campus life—are dedicated to maintaining Oxford's longstanding status as a learning community characterized by intellectual vitality and freedom, individual responsibility, personal care, and mutual trust.

By focusing upon the educational needs of freshmen and sophomores, Oxford College concentrates its efforts toward providing students with opportunities to acquire the skills and knowledge necessary for academic success in the remaining years of their undergraduate study and to develop the values that characterize a well-educated person. To achieve these ends, both the curriculum and cocurricular activities of Oxford College are designed to teach students to read perceptively, think independently, communicate clearly, and embrace responsible citizenship. Thus, Oxford College creates an environment in which motivated students progress toward the kind of intellectual, social, and personal maturity that will help them lead full and useful lives.

Accessibility

It is the policy of Oxford College that all programs shall be accessible to students with disabilities, as specified by the Americans with Disabilities Act.

Emory University

From its founding in 1836, Emory University has grown into a national teaching, research, and service center with an enrollment of 10,500. A coeducational, private university affiliated with the United Methodist Church, Emory awards more than 2,000 degrees annually. In addition to Oxford College, the university comprises Emory College; the Graduate School of Arts and Sciences; a broad program in the allied health professions; and the Schools of Business, Law, Medicine, Theology, Nursing, and Public Health.

Among the centers for specialized research and study at Emory are the Graduate Institute of the Liberal Arts, the Division of Biological and Biomedical Sciences, the Carter Center, the Rollins Center for Church Ministries, the Emory Center for International Studies, the Center for Research in Faith and Moral Development, and the Michael C. Carlos Museum. Campus-based independent affiliates include the African Studies Association; Scholars Press; the National Faculty for the Humanities, Arts, and Sciences; and the Georgia Endowment for the Humanities.

Emory University maintains exchange agreements with the following universities abroad: Augsburg, Berlin, Göttingen, and Regensburg (Germany); Peking, Xiamen, and Xi'an Medical (People's Republic of China); Institute of State and Law of the Academy of Sciences and the Pushkin Institute (Moscow); and Tbilisi State University (Republic of Georgia); St. Andrews (Scotland); Johannes Kepler (Austria); Kobe (Japan); Leiden (Holland); Montpellier (France); and Trieste (Italy).

Emory's Robert W. Woodruff Medical Center includes the Schools of Medicine, Public Health, and Nursing; The Emory Clinic; Emory University Hospital; Crawford Long Hospital of Emory University; the Jesse Parker Williams Pavilion; and the Yerkes Regional Primate Research Center. Independent affiliates located in the vicinity of the medical center include the Georgia Mental Health Institute, the American Cancer Society, Wesley Homes, the U.S. Centers for Disease Control and Prevention, and the following hospitals: Grady Memorial, Egleston Hospital for Children, and the Atlanta Veterans Affairs Medical Center.





Admission

Requirements

Freshman applicants to Oxford must submit entrance credentials indicating graduation from a secondary school with at least sixteen acceptable units of work. Oxford strongly recommends the following.

<i>Subject</i>	<i>Years</i>
English	4
mathematics (including algebra II)	3
foreign language	2
social studies	2
laboratory sciences	2

The applicant must also present satisfactory scores on the examinations of the College Entrance Examination Board (SAT: Oxford College code number 5186) or the American College Testing Program (ACT: Oxford College code number 0815).

To receive an application for admission, write the Director of Admission, Oxford College, P.O. Box 1418, Oxford, Georgia 30267.

Application Procedure

Application Fee

A nonrefundable thirty-five-dollar processing fee must accompany each completed application.

Regular Decision Plan

Applications are accepted on a “rolling” basis. Admission decisions are made within four to six weeks after an application is complete. A complete application consists of the application form, the thirty-five-dollar nonrefundable processing fee, a high school transcript that includes completed work through the junior year, SAT or ACT scores, and a letter of recommendation.

Students who wish to enter college before graduating from high school may apply to Oxford through the **Early Admission Program**. These students must have completed the junior year in high school with an outstanding academic record and a minimum of fourteen academic units. SAT or ACT scores are required along with a letter of recommendation from a high school official. Such students are admitted as regular students.

For further information, write the Director of Admission, Oxford College, P.O. Box 1418, Oxford, Georgia 30267.

Admission Decisions

Upon notice of acceptance, a deposit of \$200 is required, which will apply toward the first semester’s tuition. The deposit may be refunded if requested before May 1 for summer or fall enrollment and before December 15 for spring enrollment. Extensions will be granted on the deposit deadline if requested in writing by the student.

Physical Examination

Each applicant must submit a health report on forms provided by the college. This report should be mailed early in the summer, before enrollment, to Student Health Service, Oxford College, Oxford, Georgia 30267. The report is required for registration. After an attendance lapse of one year or more, a new physical examination report is required for readmission.

Accelerated Degree Programs

Joint Enrollment

Up to thirty-two semester hours of credit may be allowed for course work taken at Oxford College or another accredited college or university in an approved joint enrollment program. Interested students should consult their high school counselors or write, for more specific information, to the Director of Admission, Oxford College, P.O. Box 1418, Oxford, Georgia 30267.

Advanced Placement

Oxford College will grant up to sixteen hours of AP credit, according to the following guidelines: four semester hours of credit will be granted for each score of four or five on examinations of the Advanced Placement Program of the College Entrance Examination Board; four semester hours of credit in computer science for a score of three on either of the computer science examinations; the French, German, and Spanish departments will review the examination booklets for scores of three and decide whether to award credit. No other departments will consider scores of three for credit. No credit is granted at Oxford College for scores of one or two.

Whether such credit shall apply to Oxford's distribution requirements is a determination made by the faculty in the discipline granting the credit. Not more than eight hours of AP credit will be granted in the same academic division. Applicants should request that scores be sent to the Office of Records and Registration.

International Baccalaureate

Oxford College recognizes the academic challenge of the International Baccalaureate and will grant credit for scores of five, six, or seven on the higher-level examinations. Such credit may be awarded in up to three disciplines. No credit will be allowed for subsidiary-level examinations. Applicants should request that scores be sent to the Office of Records and Registration.

Transfer Applicants

Requirements

Oxford welcomes applications from students who have attended other colleges.

If less than a year of college-level work has been completed, the high school transcript and SAT or ACT scores should be submitted as part of the admission application. An official college transcript should be sent from all previously attended colleges to the Director of Admission, Oxford College, P.O. Box 1418, Oxford, Georgia 30267. The student must be eligible to return to the previous institutions and should have an overall grade-point average equivalent to a C or better at Oxford.

Transfer students from approved colleges may receive credit at Oxford for previous work, provided their performance is creditable and the work consists of acceptable academic college-level courses. To qualify for the associate of arts degree and for continuation at Emory College, transfer students are required to take at least two semesters of residence at Oxford, earning a minimum of thirty-two credit hours and taking a minimum of one physical education course from each of the three physical education areas.

Transient Study

Oxford students who wish to enroll for summer work at another institution must secure written permission of their academic adviser. Since permission depends upon approval of the intended courses, students should contact their academic adviser well before the end of the spring semester to obtain a transient permission form. The transient permission form and catalog description should be turned in to the Office of Records and Registration. For credit to be received, an official transcript must be received in the Office of Records and Registration by December of the year courses were taken. Students who wish to enroll as a transient at Oxford must also present written permission from their own dean or registrar.

Readmission

To return to Oxford after withdrawing or being absent for one or more semesters (other than the summer semester), students must complete a readmission form (available from the academic coordinator). There is no application fee for readmission.

Students who have had no academic or conduct problems and who have not enrolled in other colleges will be automatically readmitted.

Students requesting readmission after exclusion must petition for readmission no later than four weeks prior to the end of the term preceding the one for which readmission is requested (see "Probation and Exclusion").

Readmission following withdrawal for medical reasons requires clearance by designated university health officials.

New Student Orientation

Oxford College offers an orientation program the weekend prior to the start of fall semester. All new students are required to attend, in order to become familiar with the campus, meet members of the faculty, and register for the fall semester. New students will be informed about dates and locations of orientation activities. Parents are urged to attend events on the first day of the orientation program, meet the faculty and administration, and become acquainted with the educational philosophy of Oxford College. Students entering Oxford College spring semester have a one-day orientation program the Sunday before classes start.



Financial Information

Expenses

Basic Cost

Basic expenses for the academic year 1995–1996 are approximately \$9,050 per semester (tuition, fees, room, and board). The student should allow additional funds for such expenses as books, laundry, personal items, and entertainment.

Tuition

The 1995–1996 semester tuition charge of \$6,675 includes full-time instruction in a normal program of study, use of facilities and equipment, medical and health service, and library service.

Part-time students (with a course load of fewer than twelve semester hours) are charged \$556 for each semester hour. This charge does not include medical and health service.

Off-campus courses during the interim and summer terms require the payment, at registration, of \$417 per semester hour. There is an additional charge for living and traveling expenses incurred in these courses. These costs are announced at the time of registration for the course.

Room and Board

The cost of room and board for each semester of the 1995–1996 academic year will range from \$2,235 to \$2,396, depending on residence hall assignment. This rate applies to a double room in the residence halls. Private rooms—usually available only for a few sophomores—entail an additional charge. The cost also covers all meals (three meals a day, seven days a week) in the campus dining hall.

In addition, all students living on campus must pay a housing deposit of \$100. This deposit is refunded after the student's departure from Oxford, if the student does not owe residence hall damage fees or illegal check-out charges.

Oxford is a residential campus, so students are required to live on campus and participate in the meal plan. Only students who are given permission to live at home (with their parents or guardians) within commuting distance (twenty-five miles or less) are exempt from the campus residency and meal-plan requirement. All exceptions must be submitted in writing at least one month prior to the student's entry into Oxford and approved by the associate dean for Campus Life.

All residence hall rooms are furnished with beds, mattresses, desks, chairs, dressers, and sinks. Students furnish their own sheets, blankets, towels, and pillows. Radios, stereos, television sets, and small refrigerators—less than five cubic feet in size or 2.5 amps (UL approved)—are permitted, but cooking equipment (e.g., microwaves, hot plates, toaster ovens) and major appliances (e.g., window air-conditioners) are not permitted.

Financial Assistance

Despite the rising cost of education, Oxford College believes that financial circumstances should not prevent an academically qualified student from attending the college of his or her choice. Scholarships, loans, and on-campus employment tailored to individual ability and need are available at Oxford. Oxford College works to combine scholarships, loans, and part-time employment with parental assistance so that students are able to do their best work without financial strain.

A student must reapply for aid by the deadline each year. Provided the student continues to demonstrate financial need, a freshman recipient can expect his or her aid package to be renewed for the sophomore year at Oxford. Given continued demonstration of need, students continuing at Emory College for their junior and senior years can expect to receive the same percentage of tuition in need-based scholarship aid that they received at Oxford.

Need-based grants are awarded for an academic year, provided the student is not placed on academic probation for two consecutive semesters, or placed on conduct probation for the second time, or found guilty of a conduct council violation while serving on conduct probation. A student placed on honor council probation for the second time will automatically lose his or her grant. Moreover, a student may have Oxford grant funds reduced for the second year if the student is on academic probation.

Academic scholarships are awarded solely on the basis of academic and personal merit. Students accepting academic scholarships at Oxford are expected to be enrolled for four semesters. Academic scholars placed on honor council probation for the first time or conduct probation for the second time will lose their scholarships permanently.

Oxford uses the Financial Aid Form (FAF) of the College Scholarship Service, along with the Free Application for Federal Student Aid (FAFSA), to determine students' financial needs. The College Scholarship Service is a cooperative program for handling confidential statements submitted by parents in support of application for financial assistance.

A FAF and FAFSA may be obtained from a student's high school guidance office or by writing to the Oxford College Financial Aid Office. To receive priority treatment, the statement should be filed by February 15 of the year in which the student will require aid. Financial-aid award packages are mailed by April 15.

Only applicants who have been accepted for admission as freshmen or who are already enrolled will be considered for financial aid. This measure will ensure that the student will meet the Oxford deadline of April 1.

Academic Scholarships

Robert W. Woodruff Scholars

The Robert W. Woodruff scholarship competition is for high school seniors who have demonstrated qualities of forceful and unselfish character, intellectual and personal vigor, outstanding academic achievement, impressive skills in communication, significant leadership and creativity in school or community, and clear potential for enriching the lives of their contemporaries at Emory University. All students who apply for admission to Oxford College by January 15 are automatically considered for these awards and will be notified by February 1 if they are chosen as scholar candidates. Students must maintain a 3.2 grade-point average to continue as Woodruff Scholars.

Scholarships are granted for four years and are awarded solely on the basis of outstanding merit, without regard to financial need, race, color, religion, sex, sexual orientation, national origin, age, disability, or veteran's status.

Dean's Scholars

These full-tuition scholarships are awarded annually to freshman applicants. Selection is based on demonstrated academic achievement and leadership capabilities. Each student must maintain a 3.2 grade-point average to continue as a Dean's Scholar. All students who apply for admission to Oxford College by January 15 are automatically considered for these awards.

Faculty Scholars

These scholarships for 50 percent of tuition are awarded annually. Selection is based on demonstrated academic achievement and leadership capabilities. At Oxford, students must maintain a 3.2 grade-point average to continue as Faculty Scholars within the Emory University system. Outstanding sophomore students may be selected to receive these scholarships.

Oxford Scholars

Academic scholarships are awarded annually to Oxford students continuing on the Atlanta campus. These students are nominated by the dean of Oxford College in consultation with the Oxford faculty and staff. Nominees must show academic achievement, leadership ability, strong character, and potential to make significant contributions to Emory College. Final selections are made by the dean of Emory College. This scholarship is renewable for the senior year, provided the student maintains an acceptable academic record.

Named Scholarships

In addition to the financial assistance for students provided in the operating budget of Oxford College, there are thirty-two endowed scholarships that have been given as charitable investments in youth and in memory of friends and loved ones. Friends and alumni who are interested in establishing such scholarships are invited to contact Oxford's Office of Institutional Advancement.

Dr. Arthur Nicholas Anderson, Jr., Memorial Scholarship

Established in 1977 by Mrs. Betty C. Anderson in memory of her husband, a member of Oxford's class of 1938.

James Y. and Kathleen Grogan Arnold Memorial Scholarship

Established in 1983 by James Y. Arnold, Jr., in memory of his parents. This scholarship is for a worthy student from Elbert County.

The Arnold Foundation Leadership Scholarship

Provided by the Arnold Foundation in 1985 to fund scholarships for deserving students residing in Newton County or surrounding counties. The foundation was established by Robert and Florence Arnold of Covington.

Josiah K. Bates Scholarship

Established in 1993 as a bequest from the estate of Josiah K. Bates, who was graduated from Oxford College in 1954.

Jackie and Clifford Bell Scholarship

Established in 1993 by Clifford A. Bell '46 of Sandersville, a charter member of the Oxford Board of Counselors, and his wife, Jackie.

Branham Scholarship

Provided through the estate of Elizabeth F. Branham in memory of her grandparents, the Reverend and Mrs. W. R. Branham, Sr.; her parents, the Reverend and Mrs. W. R. Branham, Jr.; and Miss Lynn Branham.

E. J. Brown Scholarship

Established in 1958 by Mr. Phil Buchheit, publisher of the Spartanburg, South Carolina, *Herald-Journal*, and friends in memory of Mr. E. J. Brown, a former member of the faculty.

Edmond Weyman Camp, Jr., Scholarship

Started in 1978 by members of the Camp family and friends in honor of Dr. Edmond Weyman Camp, Jr., a former member of the Oxford faculty who was graduated from the Emory University School of Medicine in 1935.

Cline Family Music Scholarship

Given in 1985 by John Cline, Pierce Cline, and Lucie Huie, this fellowship is awarded to musically talented students who agree to participate in the music program of Oxford College and Allen Memorial United Methodist Church.

Harold and Lucille Dobbs Scholarship

Established in 1988 by Denny Dobbs, a 1965 Oxford College graduate, in memory of his parents.

Carmen and Willie D. O'Kelley DuBois Scholarship

Established in 1990 through the estate of Carmen and Willie DuBois.

Brad Edwards Scholarship

Established in 1990 in memory of Oxford student Bradley Patrick Edwards by his parents, Mr. and Mrs. J. Joseph Edwards, and friends.

Marshall R. Elizer Scholarship

Funded in 1987 by alumni and friends of Oxford College in honor of Marshall R. Elizer. Elizer served as business manager, director of student services, and professor of mathematics from 1946 to 1978.

Etheridge Scholarship

Given in 1968 by the Reverend Roy P. Etheridge '15, a retired United Methodist minister, in memory of his parents Robert A. and Harriet K. Etheridge.

Fleming Scholarship

Funded in 1976 by gifts from alumni and friends of Oxford College in honor of Neal Bond Fleming, dean of Oxford College from 1966 to 1976.

Franklin Foundation Scholarship

Established in 1993 by the John and Mary Franklin Foundation.

Godfrey Scholarship

Established in 1957 by Mr. and Mrs. S. Charles Candler of Madison, Georgia, in memory of Mr. and Mrs. P. W. Godfrey, Mrs. Candler's parents.

John and Sara Gregory Scholarship

Established in 1987 in honor of John and Sara Gregory. John Gregory taught literature at Oxford College for thirty-two years. Sara began as a chemistry professor and then served as the Oxford librarian for eighteen years.

Curry T. and Bobbie Haynes Scholarship

Funded in 1978 by gifts from alumni and friends of Oxford in honor of Curry T. Haynes, professor of biology from 1945 to 1970, and Bobbie Haynes, infirmary supervisor from 1946 to 1978.

Robert Ingram Scholarship

Established in 1993 by Dr. Robert Ingram '65 of Opelika, Alabama, in memory of his parents.

A. W. Jackson Endowed Scholarship

Established as part of the sesquicentennial campaign in 1987 to honor Professor A. W. Jackson, physics and math professor from 1930 to 1945 and Oxford College business manager from 1945 to 1971.

King Scholarship

Funded jointly by Oxford College and the Newton County King Scholar Fund, Inc. and given to a student from Newton County High School who chooses to attend Oxford College.

J. Frederick and Mary Burns Landt Scholarship

Provided by family and friends in 1991 in memory of Dr. Fred Landt, an Oxford College professor of biology for twenty-nine years, and in honor of his wife, Mary B. Landt, an Oxford College library assistant.

Worthey F. and Vara Kitchens Lunsford Scholarship

Established in 1988 as a bequest from the estate of Reverend Lunsford, who was graduated from Emory Academy in 1925. Reverend Lunsford was a Methodist minister who maintained an interest in Emory and Oxford College throughout his life.

Charles and Eloise Mann Scholarship

Established in 1993 by Henry Mann '62 of Atlanta and his brother, Dr. Charles Mann '57 of Fort Worth, Texas, in honor of their parents.

William Arthur Matthews Scholarship

Started in 1978 by Beverly Cone Matthews Sossoman '38 in memory of her husband, Dr. William A. Matthews '32.

Dan C. Moore Endowed Scholarship

Established in 1987 as part of the sesquicentennial campaign. The scholarship honors Professor Dan C. Moore and his forty years of teaching mathematics and physics.

Bill and Nancy Murdy Scholarship

Established in 1993 by Oxford's dean and chief executive officer, William H. Murdy, and his wife, Nancy.

David L. and Leila Thornley O'Neal Scholarship

Established in 1979 by David L. and Leila Thornley O'Neal and Hariette Louisa Thornley.

Albert W. Rees Scholarship

Established in 1957 by family and friends in memory of Professor Albert W. Rees, a former superintendent of the university and academy at Oxford.

Renfroe Scholarship

Established in 1991 by Gerald and Jean Eickhoff in honor of Mrs. Eickhoff's parents, Dr. and Mrs. Carl Renfroe.

Stevens Scholarship

Provided in 1957 by Mrs. Marie Stevens Walker Wood of Macon, Georgia, in memory of her father, Walter Crawford Stevens, of the class of 1873.

E. Walton Strozier Scholarship

Funded in 1979 by gifts from alumni and friends of Oxford in memory of E. Walton Strozier '14, professor of social studies and a member of the faculty for thirty-six years. Professor Strozier retired in 1960.

Stubbs Honorary Scholarship

Funded each year by the Walter Clifton Foundation in appreciation for and in honor of William and Rachael Stubbs.

Swann Scholarship

Given by Mrs. Julia Swann Miller Williford in memory of her son, Mr. Thomas Chalmers Swann III, a student at Oxford in 1943. This scholarship is for a worthy student from Newton County.

Additional Scholarships

Two scholarships are provided by the United Methodist Church for outstanding Methodist students. The Mobil Chemical Company also donates an annual scholarship for a deserving student.

Methodist Ministerial Scholarships

Sons or daughters of active ministers or missionaries may receive a scholarship of 45 percent of current tuition. Application forms may be obtained from the Oxford Financial Aid Office.

Courtesy Scholarships

Sons or daughters of Emory University faculty or staff members may receive full-tuition scholarships, depending on the eligibility of the faculty or staff member. Applications should be obtained from the University Human Resources Office.

Georgia Tuition Grant

A state grant is available to each legal resident of Georgia who attends a private college in the state and takes a minimum of twelve semester hours. Formal application for this grant must be made each year through the Financial Aid Office at Oxford. The amount of the grant varies each year. The Financial Aid Office at Oxford should have information on funding amounts each summer.

Part-time Jobs, Loans, and Veteran's Benefits

Information concerning part-time jobs in offices, the library, the dining hall, residence halls, and laboratories; loan funds available to prospective students; and any aspect of the financial benefits available for veterans or their dependents may be obtained from the Financial Aid Office, Oxford College, P.O. Box 1418, Oxford, Georgia 30267.

Refunds

A student who withdraws from school within the first five weeks of a semester receives an adjusted, proportionate refund of tuition (see "Cancellation and Withdrawal"). Students who remain in school and reduce their course load receive no refund. A student who is dismissed from the university receives no refund. Room and board refunds are made on a prorated basis.

Health Services

Student Health Service

Health services are provided on campus under the direction of a nationally certified nurse practitioner working with a board-certified internist in the community. Basic services include evaluation and treatment of general medical problems and minor emergencies, referrals to specialists, health education, and reference materials on various health and wellness topics.

All currently enrolled students are eligible for basic services available through the nurse practitioner at no cost. Students with special or complex and chronic health problems may be referred to the medical adviser, who also provides basic services (including evaluation services) at no cost. Students are responsible for costs associated with the following services: laboratory tests, X rays, hospitalization, hospital emergency-room visits, prescription medicines, medical supplies, and referrals to health-care providers not employed by Oxford.

In the event of serious illness or accident, parents or guardians will be informed. When a parent or guardian cannot be located, the college reserves the right to make decisions concerning emergency health care.

Prior to registration, all students are required to complete an Entrance Medical Record before health care can be rendered. All immunizations must be current.

Insurance

An optional group accident and sickness insurance policy is available to students. Prior to registration, international students are required to buy the insurance offered by the college or provide proof of coverage. International students should mail proof of coverage to the Academic Coordinator, Oxford College, Oxford, Georgia 30267. Students covered by personal or parents' insurance should have in their possession at all times a wallet card with the insurance policy number.

For additional information about the student health program and health insurance, contact the Student Health Service or the Campus Life Office.

Counseling Center

The Counseling Center offers free, confidential student counseling for personal, emotional, and adjustment problems. Services include short-term individual therapy, group counseling, career assessment, and referral to appropriate on-campus and off-campus resources. Students may also avail themselves of the Counseling Center library, which contains books, audio tapes, and videotapes on mental-health-related topics as well as materials designed to aid in career choice and study skills.

do

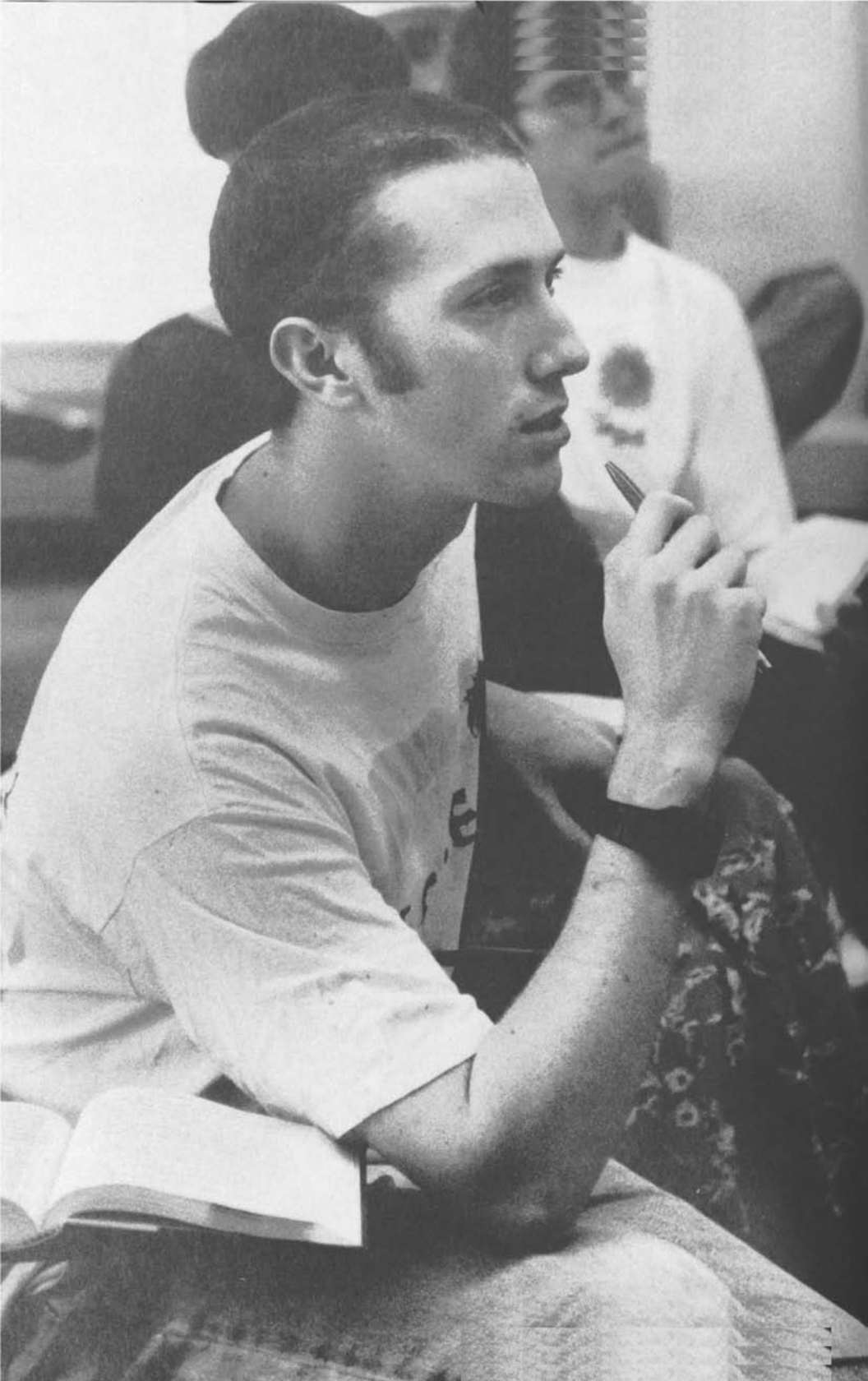
~~do~~

do

do

do





Academic Programs

Courses of Study

Oxford College offers two years of study in the arts and sciences. After successfully completing Oxford's program, students receive the associate of arts degree and may continue as juniors in Emory College. The Oxford curriculum also prepares students for programs in the Division of Allied Health Professions, the Nell Hodgson Woodruff School of Nursing, and the Roberto C. Goizueta Business School of Emory University.

Summer School

The Oxford Summer School Program is jointly conducted with Emory College on the Atlanta campus. An Oxford student who plans to begin his or her college career in the summer should inform the director of admission at Oxford College of his or her intention. For more information about summer school, contact the academic coordinator.

Emory College Programs

Bachelor of Arts

B.A. programs are offered in African-American studies, anthropology, art history, biology, chemistry, classical civilization, classical studies, classics, creative writing, economics, educational studies, elementary education, English, film studies, French, French cultural studies, German studies, Greek, history, international studies, Judaic languages and literature, Judaic studies, Latin, Latin American and Caribbean studies, liberal studies, literature, mathematics, mathematics/computer science, medieval and Renaissance studies, music, Near Eastern studies, philosophy, physics, political science, psychology, religion, Russian, sociology, Spanish, theater studies, and women's studies. A comajor is offered in human and natural ecology.

Bachelor of Science

B.S. programs are offered in anthropology and human biology, applied physics, biology, chemistry, mathematics, mathematics/computer science, and physics.

Minors

Minors are available in African-American and African studies, anthropology, Arabic, art history, computer science, dance, English, film studies, French, German, Greek, Hebrew, history, Italian, Judaic languages and literature, Judaic studies, Latin, Latin American studies, philosophy, political science, psychology, religion, Russian, sociology, Soviet, Post-Soviet, and East European studies, Spanish, theater studies, and women's studies.

Early Acceptance and Combined Degree Programs

Students who enter the combined degree program may earn a bachelor of arts or a bachelor of science degree from Emory College and a professional or advanced degree from another division of the university or from the Georgia Institute of Technology. These programs include the following.

Three-Two Program in Engineering

A dual degree in arts or science and engineering is offered in cooperation with the Georgia Institute of Technology. The program lets qualified students enroll in a variety of liberal arts courses and complete any of the arts or science majors listed on page twenty-one before studying engineering at Georgia Tech. Normally, students attend Emory for three years to complete the basic mathematics and science courses that are prerequisites in all engineering curricula. Specialized course work for the engineering major requires approximately two additional years at Georgia Tech. Students who begin at Oxford College should contact the associate dean for academic affairs in the first semester to express interest in the three-two program.

Accelerated Master's Program

Students may earn the bachelor of arts and the master of arts degrees in English, history, philosophy, political science, or sociology within four years; or they may earn the bachelor of science and the master of science degrees in biology, chemistry, mathematics, mathematics-computer science, or physics within four years.

Early Acceptance Program to Medical School

The Emory School of Medicine reserves a few positions each year for Emory College and Oxford College students accepted through the Early Acceptance Program. Candidates for this program apply for admission to the School of Medicine in the spring semester of their sophomore year. Preference is given to students who propose to pursue stimulating studies in the humanities and social sciences while completing their bachelor's degree requirements in Emory College.

Students who complete two full years of the premedical program at Oxford College with at least a 3.5 grade-point average may apply for early acceptance by the Emory School of Medicine. These students must complete the premedical and bachelor's degree requirements in Emory College before matriculating in the School of Medicine two years later. Up to five students may be accepted this way each year. Appropriate college and medical school faculty will assist the selected students in planning programs of study for their remaining college years that integrate liberal arts and preprofessional studies. For more information, contact the associate dean for academic affairs.

Roberto C. Goizueta Business School of Emory University

Oxford College students may apply to the B.B.A. program of the Business School early in their last semester at Oxford. Applicants are expected to fulfill requirements for graduation from Oxford, though enrollment in the Business School is limited and completion of preadmission courses does not guarantee admission. Business school admission is competitive, based on grade-point average, leadership, extracurricular activities, and a letter of recommendation. Applications for admission are available in the Oxford College Office of Records and Registration.

The Business School recommends the following preadmission courses:

1. Mathematics 119. Mathematics with Business Applications (summer school only) or Mathematics 111, 112. Calculus I and II.

2. Economics 112. Principles of Macroeconomics.
3. Economics 101. Principles of Microeconomics.
4. Business 210. Financial Accounting.

Students who do not complete the preadmission courses prior to admission to the business school are required to complete those courses in Emory College by the end of the second semester in the business school.

Emory Nursing School

The Nell Hodgson Woodruff School of Nursing at Emory University offers Oxford students a chance to transfer automatically into its B.S.N. program. Students who do not meet the criteria for automatic transfer from Oxford to the School of Nursing are encouraged to apply for admission to the B.S.N. program through the regular process. Criteria for automatic transfer from Oxford are as follows:

1. Cumulative grade-point average of 3.0 or better in academic courses.
2. Grades of C or better in prerequisite courses.
3. Application in by March 1.
4. All credits earned at Oxford or Emory.

The specific course requirements for Oxford students are as follows: Biology 121, 122; Chemistry 100 or 141; Chemistry 120; a course in microbiology that includes a lab; four courses from the Division of Humanities, including English 181; Math 107 (Statistics); and four courses from the Division of Social Sciences, including one course in history, economics, or political science; Psychology 100; Psychology 205; and Sociology 101. In addition, students must be certified in cardiopulmonary resuscitation (CPR). Students seeking automatic transfer should complete application forms obtainable from the Office of Enrollment Services at the School of Nursing and submit required transcripts by March 1.

Preprofessional Programs and Requirements

The Oxford curriculum provides background for a number of professional programs. Some of these are listed below along with suggested courses for preparation. Each student planning to pursue one of these professions should work with his or her academic adviser to plan a program of study at Oxford College.

Allied Health Professions

The Division of Allied Health Professions of Emory University offers several programs leading to the bachelor of medical science. The B.M.Sc. degree is offered for physician associate, radiologic technology, and respiratory therapy. More specific information on these programs and entrance requirements is available in the division office.

Dentistry

Students may take their pre dental requirements at Oxford and apply to dental schools of their choice. Most dental schools require the following courses in addition to a bachelor's degree: Biology 141, 142; Chemistry 141, 142, 221, 222; two English courses; Mathematics 111 or equivalent; and Physics 141, 142.

Engineering

Students may take their pre-engineering requirements at Oxford and apply to engineering schools of their choice. For most schools, the requirements include Chemistry 141 and 142; Mathematics 111, 112, 211, 212; Physics 151, 152; and social science and humanities electives.

Law

A bachelor's degree, including a well-rounded liberal arts education, is required for admission to the Emory law school, but no particular curriculum is prescribed.

Medicine

The Emory University School of Medicine requires the bachelor's degree and the following courses: Biology 141, 142; Chemistry 141, 142, 221, 222 (260 recommended); two English courses; and Physics 141, 142 (or 151, 152).

Pharmacy

Students may take prepharmacy requirements at Oxford and apply to pharmacy schools of their choice. For most schools the prepharmacy requirements are the following: Biology 141, 142; Chemistry 141, 142, 221, 222; Mathematics 111; Physics 141, 142; English 181; Economics 112; History 133; Political Science 100; and literature and social science electives.

Theology

Students preparing for the Christian ministry should seek a broad liberal arts education. Admission to the master of divinity program in the Candler School of Theology requires a bachelor of arts, bachelor of science, or equivalent degree.

Veterinary Medicine

Students may take preveterinary requirements at Oxford and apply to veterinary schools of their choice. In general, the preveterinary requirements are the following: Biology 141, 142; Chemistry 141, 142, 221, 222; English 181; Physics 141, 142; and humanities and social science electives.

Academic Load and Credit

The standard unit of credit in the semester system is the semester hour. Most courses earn four semester hours and meet for fifty minutes on Mondays, Wednesdays, and Fridays (MWF) or for seventy-five minutes on Tuesdays and Thursdays (TTh). Physical education classes meet for three hours per week. Classes begin at five minutes past the scheduled time. Required laboratories for most science courses meet an additional three hours per week, usually from 2:00 to 5:00 P.M.

Normal Load

A normal load is sixteen hours per semester (that is, four four-hour courses) plus physical education.

Maximum Load

The maximum academic load is twenty-two hours plus physical education. (Special permission is required for more than eighteen hours.)

Minimum Load

The minimum load is twelve hours per semester for a full-time resident student.

Uniform Requirements

To receive the A.A. degree, the student must complete sixty-four semester hours plus physical education, subject to the Distribution Requirements stated below.

Distribution Requirements*Humanities*

Students must complete three four-semester-hour courses in humanities, distributed as follows:

1. English 181 or English 205, completed during the freshman year, to fulfill the literature/composition requirement.
2. Two courses, at least one of which must be in art history, civilization/literature in translation, foreign language, music, philosophy, or religion. Foreign language at the 101 level cannot be used to fulfill this requirement unless a 102 or higher course is completed.

Natural Science/Mathematics

Students must complete three four-semester-hour courses in natural science/mathematics, distributed as follows:

1. One laboratory science course (astronomy, biology, chemistry, geology/geography, physics).
2. One course, other than Math 101 or Math 119, in mathematics or computer science.
3. One additional laboratory science course, as specified in the first requirement, or one additional mathematics or computer science course, as specified in the second requirement.

History/Social Sciences

Students must complete three four-semester-hour courses in history/social sciences, distributed as follows:

1. History 101 or 102.
2. Two courses, at least one of which must be in the social sciences (anthropology, economics, political science, psychology, and sociology).

Physical Education

Students are required to take one one-semester-hour physical education course for each semester in residence (four courses maximum). These courses must include one course from each of three areas (aquatics, health/fitness, and lifetime activities). Courses will be adjusted to accommodate physical limitations.

Additional Credit

Oxford Studies

Oxford Studies is a one-hour elective course that may be repeated each semester of residence. The course focuses on selected issues of human values. Credit is earned through a quiz on assigned reading; lectures; concerts; films; and community service. First-semester freshmen who enroll in Oxford Studies must enroll in the Freshman Seminar.

Off-campus Courses

Off-campus programs provide students with the opportunity to combine study with travel. A grade-point average of at least 2.0 is required to enroll in off-campus courses. Although there is no limit to the number of hours a student may take in off-campus courses, no more than four semester hours may be used to fulfill the distribution requirements of any division. These courses involve a combination of on-campus and off-campus study. The off-campus travel portion of a course may be offered in the interim period between fall and spring semesters or during the summer. The on-campus portion is offered during the regular term preceding the off-campus portion of the course. Since these courses are not part of a full-time load, they require tuition charges of \$417 per semester hour. Additional costs include living and travel expenses. The following off-campus courses have been offered (see "Course Descriptions" for additional information):

Anthropology 116Q. Field Studies in Native American Culture

Geology 100N. Desert Geology

Sociology 215N. Social Problems

Four-hour Courses That Do Not Meet Distribution Requirements

Certain four-hour courses may be specified by the faculty as credit courses that do not meet distribution requirements. These courses are designated as such in their catalog descriptions. Currently, these courses are as follows: Business 210; English 101; Mathematics 101; Mathematics 106 and 119 (summer school); variable credit courses; and interdivisional courses.

Microbiology for Prenursing Students

Prenursing students may register for HS303 (Microbiology) at Emory Nursing School. Four semester hours of elective credit will be granted to the student who successfully completes this course. The dean's consent will be required prior to registration.

Academic Honors

Honor List

The honor list is for students who earn a cumulative average of 3.5.

Merit List

The merit list is for students who achieve an average of 3.0 for a semester.

Alpha Epsilon Upsilon

Established at Oxford in 1906, Alpha Epsilon Upsilon promotes scholastic excellence and fosters friendship among those who earn high scholastic standing. Students who attain a grade-point average of at least 3.75 after one semester (at least sixteen semester hours) or at least 3.50 after two semesters (at least thirty-two semester hours), or at least 3.33 after three semesters (at least forty-eight semester hours, but not more than sixty hours) are eligible for membership.

Phi Theta Kappa

A national honor society, Phi Theta Kappa requires that students rank in the top 5 percent of the class after two semesters and be recommended by the faculty.

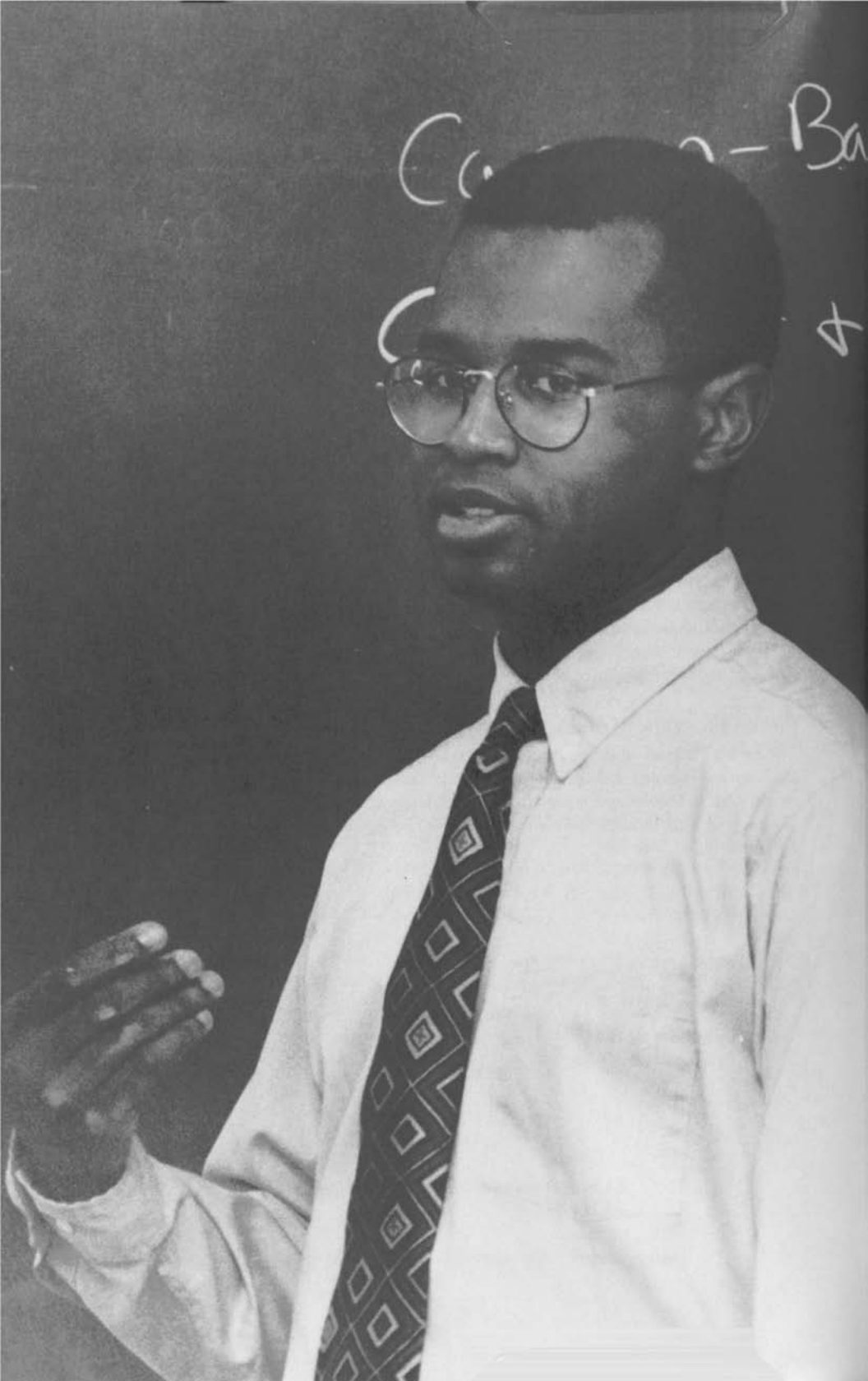
Academic Advisers

Every student is assigned a member of the faculty who serves as that student's academic adviser. Assignments are usually based on the student's academic interests as indicated at the time of enrollment. Students who wish to change advisers should consult with Oxford's academic coordinator.

Each student is responsible for knowing and meeting the requirements for graduation explained in this catalog.

Pierce Program in Religion

The Pierce Program in Religion, inaugurated in fall 1977, was established in memory of Dr. Lovick Pierce and Bishop George F. Pierce. The program includes community as well as academic activities and is designed to enhance religious life at Oxford College. Each semester, Oxford Studies 100R is offered under the direction of the Pierce Professor of Religion.



Educational Resources

Libraries

Hoke O'Kelley Memorial Library

The Hoke O'Kelley Memorial Library provides resources, facilities, and services for research and study at Oxford College. The collection contains more than 69,000 volumes and more than 300 current periodical subscriptions. Resources also include compact disc data bases, audiovisual materials, and microform materials. The library building has computer labs, individual carrels, rooms for group study, and facilities for use of audiovisual materials.

In addition to providing individual reference assistance, library staff members work with faculty members to provide library instruction in conjunction with specific courses. Computerized data base search services are also available. Interlibrary loan services provide access to materials in other Emory libraries and other libraries in the United States.

Emory University's automated library system provides access to materials available at Oxford and at the other Emory libraries. This online catalog is available through terminals in all libraries and through dial-up access from dormitories or off-campus residences.

Other Emory University Libraries

Oxford College students have access to resources in six other Emory libraries: the Robert W. Woodruff Library for Advanced Studies, the Asa Griggs Candler Library, the James Samuel Guy Chemistry Library, the Law Library, the Health Sciences Library, and the Pitts Theology Library. Total collections for the university number approximately 2.2 million volumes, 1.5 million microforms, 38,000 microfilm reels, 5,600 linear feet of manuscripts, and a growing inventory of nonprint materials. The libraries maintain 16,000 subscriptions to serials and periodicals.

Computer Facilities

Oxford College provides a wide range of personal computers, software, and services to students, staff, faculty, and administrative users. The Oxford College Computing Center provides student computing laboratories in Pierce Hall and in the library, and a multimedia laboratory in Humanities Hall. Available equipment includes Macintosh and IBM computers with both ink-jet and laser printers. Software, documentation, and instructional assistance is available in the computer lab for word processing, course-related work, and research.

Some courses are taught in the computer lab; a number of others make use of computers for special projects or provide tutorial software in the lab. All the computers are networked and can be used to access mainframe computers located on the Emory University Atlanta campus. Students enrolled in a class requiring the use of the mainframe have an account and ID provided by the instructor. All students are issued an account in order to access the Internet and enhance their research resources.

During freshman orientation, students are introduced to the computer facilities. Classes involving extensive use of computers also provide students with instruction in use.



Regulations

Administration of Curriculum

Administration of the curriculum is a joint endeavor of the faculty and the administration. Academic policies of the college are discussed by the Academic Policy and Planning Committee and voted on by the faculty.

Requirements for Graduation and Continuation to Emory College

Requirements for graduation from Oxford College and eligibility for continuation to Emory College are the same.

1. Fulfillment of the uniform requirements (*see* page 25).
2. A cumulative grade-point average of at least 2.0 on all work taken at Oxford College.
3. For transfer students, a minimum total of thirty-two semester hours of academic work (excluding physical education), plus one semester hour of credit in physical education for each semester in residence, with a minimum of one course from each of three areas (aquatics, health/fitness, and lifetime activities).
4. The last eight semester hours must be taken at Oxford College to complete the residency requirement.

Requirements for Continuation to Emory College

For Oxford students continuing to Emory College, the requirements of Emory College are as follows:

1. All Oxford continuees must complete the Emory College area IC distribution requirement in order to graduate from Emory College. Continuing students may complete the requirement by taking the following course of study either at Oxford or at Emory College:
 - a. a foreign language through 102 or its equivalent
or
 - b. two courses from the following (one must be mathematics/computer science): Mathematics 107, 108, 109, 111, 112 (or 112s); Computer Science 150, 170; Philosophy 110; Economics 320; Educational Studies 451, 453; Political Science 308; Psychology 230; and Sociology 355, 356. Courses taken to fulfill this requirement may also fulfill part of the Oxford College Distribution Requirements.
2. Oxford continuees must also complete the junior and senior writing requirements while at Emory College.
3. All other Emory College distribution requirements are waived for Oxford continuees who have completed the Oxford College Uniform Requirements.
4. Graduates of Oxford College must earn a total of 128 semester hours of academic credit, plus required physical education courses, in order to be eligible to graduate from Emory College. Of these credits, a minimum of fifty-four semester hours must be earned in Emory College. A minimum of three semesters of residence in Emory College (twelve semester hours or more per semester) is also required. A semester of fewer than twelve hours can be combined with another semester of fewer than twelve hours to make up one semester of residence. However, a partial semester may not be combined with a semester of more than twelve hours to form two semesters of residence.

- For further information, students may refer to the Emory College catalog or consult the academic coordinator at Oxford, who will help students plan programs for transfer to other schools. The responsibility for coordination of programs, however, remains with the student.

Financial Requirements for Graduation

It is a requirement for graduation that all financial obligations to the university shall have been satisfied. In the case of outstanding loans not then due and payable, loan documents satisfactory to the university must have been executed and delivered, and all payments must be current.

Grading System

Grades and Quality Points

The standard symbols used to indicate the quality of work are A, B, C, D, and F. However, beginning fall semester 1992 a plus-minus grading system became available to Oxford faculty on an optional basis; faculty members who choose to use plus/minus-based grading for a particular class will so state in their course syllabus.

The plus-minus grading system is mandatory in summer school.

Each passing grade carries with it a proportionate number of quality points. For each semester hour of credit, quality points are computed as follows:

Standard Four-point Scale

A = 4.0
 B = 3.0
 C = 2.0
 D = 1.0
 F = 0.0

Optional Plus-Minus Scale

A = 4.0 C+ = 2.3
 A- = 3.7 C = 2.0
 B+ = 3.3 C- = 1.7
 B = 3.0 D+ = 1.3
 B- = 2.7 D = 1.0
 F = 0.0

Symbols used that result in no credit are F, failure; W, withdrawal without grade; WF, withdrawal while failing; and AU, for courses audited. An I, incomplete, is recorded when the dean, for reasons such as a student's illness or emergency, grants a student permission to postpone a final examination or other work required to complete a course; a faculty member may request permission to assign a student an I when the faculty member needs more time to complete evaluation of that student's work. Failure to complete the work for which the I was granted by the end of three weeks in the next semester of residence in Oxford College or Emory College will result in an IF. For students who do not return to Oxford or continue at Emory, the I must be removed within a calendar year or it becomes an IF. The grades of WF and IF are computed as F.

Report of Grades

Students are notified midsemester of unsatisfactory academic performance. Course grades are mailed shortly after the close of each semester. Students who wish their parents or guardians to receive their grade reports and notification of unsatisfactory academic performance must sign a grade-release form in the Office of Records and Registration.

Class Attendance

Each student is responsible for his or her academic progress, and regular class attendance is considered necessary for the fulfillment of this responsibility. Students should understand that they are responsible for the effects of absences from class or laboratory on their academic work. Each professor will determine class-attendance requirements and may impose penalties for excessive absences. Report of excessive absences is sent to the academic coordinator and may be considered evidence of a student's disregard for academic responsibility.

Emory University policy proscribes discrimination on the basis of religious beliefs. Faculty members are urged to accommodate student absences due to participation in services on religious holidays. Students are responsible for informing professors in advance of planned religious observances that conflict with class attendance and for making arrangements to complete any work missed.

Probation and Exclusion

Academic Probation

A student whose cumulative grade-point average is less than 2.0 at the end of any grading period automatically incurs academic probation. Probationary status may be removed only at the end of a semester. Students on probation are expected to concentrate their energies on their studies in order to bring their work up to the required standards at Oxford College.

Continuation in Attendance

A student incurring academic probation at the end of a semester may continue in attendance provided the following minimum standards are met.

1. The student's cumulative grade-point average must be at least 1.0 at the end of any semester.
2. The student's cumulative grade-point average must be at least 1.5 at the end of any semester at the conclusion of which the student has attempted more than twenty-six but no more than fifty-six semester hours in Oxford College.
3. The student's cumulative grade-point average must be at least 1.7 at the end of any semester at the conclusion of which the student has attempted more than fifty-six semester hours in Oxford College, unless the student has completed five semesters.
4. A student who has completed five semesters in Oxford College will be permitted to petition for an additional semester only if the student's cumulative grade-point average is at least 1.9. Petitions will be considered by the dean and the Academic Appeals Committee. In cases where such petitions are granted, the sixth semester is normally the next consecutive semester.

Academic Exclusion

A student who fails to meet minimum requirements for continued attendance (*see above*) is automatically excluded. Excluded students may be readmitted only through appropriate petition to the dean (or designee). Such petitions are due no later than four weeks prior to the end of the semester preceding the semester for which readmission is requested and must establish a reasonable likelihood that the student's academic performance will improve substantially during the next semester. The petition must also establish that the student would reasonably be able to complete the requirements for graduation in the allowed time.

Conduct and Honor

As members of the Oxford College community of learning and as representatives of Emory University, students are assumed to be free and responsible individuals who conduct themselves in accordance with the established standards of the college community. Students of Oxford College are responsible to student government, administration, and faculty for their own conduct and for the consequences of their actions.

The Oxford College faculty, administration, and student government share the responsibility of establishing and enforcing standards of student conduct. The dean of Oxford College has final authority in all matters of honor and conduct. Each student is expected to abide by and support the Honor Code and the Conduct Code. The Honor Code addresses issues of academic integrity and honesty; breaches of this code are heard by the Honor Council of Oxford College. The Conduct Code addresses issues of nonacademic conduct, including residence hall regulations; infractions of this code are heard by the Conduct Board of Oxford College. The following are abridged versions of the Student Conduct Code and Student Honor Code. The complete codes, and forms on which to pledge that they have been read and understood, are provided to each entering student prior to registration.

Conduct Code (abridged)

Oxford College of Emory University

As Oxford College of Emory University is an institution dedicated to providing educational opportunities for its students, it strives to establish an atmosphere of responsible freedom that will enable its students to pursue their academic and personal goals. Students of Oxford College are expected to adhere to and uphold standards of deportment, integrity, and courtesy that are appropriate at an institution of higher learning. Students are responsible for their own behavior and must demonstrate a concern for the rights and welfare of other members of the Oxford College community.

Regulations

The following are regulations governing the conduct of Oxford College students. All Oxford College students are required to abide by all the following:

Administrative Regulations of Emory University: new regulations may be issued from time to time by the university.

Public Laws: Oxford College does not condone violations of or provide sanctuary from public law or its enforcement.

Oxford College Conduct Code and Oxford College Regulations: each student in Oxford College is presumed to know that the requirements of student conduct expressed or implied in this code and all other college or university regulations are in effect and applicable to him or her. While it is neither possible nor necessary to state beforehand every instance of misconduct that could result in disciplinary action against a student, it is appropriate to single out certain types of behavior that are not permissible on university property, at off-campus college or university-sponsored activities, or in any setting where the behavior affects the interest of Oxford College or Emory University.

1. Verbal abuse, physical assault, or attempted physical assault, and harassment.
2. Damage, destruction, or unauthorized removal, or theft of property of another member of the university community (student, faculty, staff, or employee), property of the university itself, or the property of a guest of the university.
3. Violation of the Emory University Policy on Drugs. (A complete statement of this policy is located in the Oxford Student Handbook.)
4. Possession, Use, Consumption, or Distribution of Alcoholic Beverages.
 - a. Georgia criminal law prohibits anyone under the age of twenty-one years of age from purchasing, possessing, or distributing any distilled spirits, wines, malt beverages, or any other alcoholic beverage. Since the majority of Oxford College students are under twenty-one years of age, the possession, consumption, use, or distribution of alcoholic beverages on the campus is especially prohibited.
 - b. The term *campus* includes all property in Oxford, Georgia, owned by Emory University (including the athletic field, gymnasium, student center, residence halls, Allen Memorial Church, and Dooley's Tavern).
 - c. No college funds may be used to purchase alcoholic beverages.
 - d. It is also a violation of this conduct code to be present in a room or other setting where the student knows that alcoholic beverages are being consumed.
5. Forging, altering, or otherwise misusing institutional documents or records, or knowingly giving false information to the institution or its duly authorized representatives. Such misconduct may fall within the jurisdiction of the Oxford College Honor Code. The appropriate hearing body of such a charge will be decided by the associate dean for academic affairs and the associate dean for campus life. Breaches of academic integrity will be handled in conformity with the Oxford College Honor Code.
6. Disruption or obstruction of teaching, residence hall life, research, administrative functions, disciplinary proceedings, freedom of movement of vehicles or persons on campus, or of other proper and authorized activities of the institution.
7. Obscene conduct on campus, on Emory University property, or at, or in connection with, institutionally sponsored or supervised functions of student organizations.
8. Unauthorized entry into, or use of, any institutional facility.
9. Possession on campus or institutional property of any weapons such as firearms and incendiary or explosive devices, including fireworks.

10. Failure to comply with directions of institutional officials, including residence advisers and student judiciary bodies, acting in proper performance of their official duties.
11. Setting a fire: tampering, misusing, or destroying fire alarms, fire hoses, fire extinguishers, or any other fire equipment; failure to exit in a prompt manner at the sound of a fire alarm.
12. Encouraging, aiding, or inciting others to violate this code.
13. Violation of public law where it affects the interests of the university: a. on campus or university property; b. at institutionally sponsored or supervised functions of student organizations; c. at off-campus locations, particularly in the Covington/Oxford community.
14. Participation in any activity considered to be hazing as described in the Emory University policy on hazing. (See Oxford Student Handbook.)
15. Violation of Oxford College Housing Regulations.
16. A student host's failure to control the behavior of his/her guests on campus.
17. Failure to cooperate in the administration of this code.

Disciplinary

- A. Disciplinary actions that may be taken include, but are not limited to:
1. **Warning.** The student shall be warned by the associate dean for campus life that he or she has violated the Oxford College Student Conduct Code and that subsequent misconduct may lead to a more severe penalty. No entry of this record shall be made in the student's personal performance record, but it may be presented in a subsequent disciplinary case.
 2. **Reprimand.** The student shall be given formal notice in writing by the associate dean for campus life that he or she has violated the Oxford College Student Conduct Code and that future misconduct may lead to a more severe penalty.
 3. **Conduct Probation.** The student shall be given formal notice in writing by the associate dean for campus life that his or her behavior has been such as to raise serious doubts about the student's ability to conduct himself or herself in a manner acceptable to the Oxford College community. The student will be placed on probationary status to determine his or her suitability to remain as a student. A student placed on conduct probation shall remain on probation for a time period set by the board of conduct investigator.
 4. **Suspension.** a. **Limited.** The student shall be informed in writing by the Associate Dean for Campus Life that he/she will be denied certain campus privileges for a stated period of time. These privileges may include, but are not limited to, class attendance, parking on campus, participation in extracurricular activities, and access to institutional facilities. b. **Immediate.** The student may be required to leave the campus immediately if, in the opinion of the dean of Oxford College, the student's presence on campus would be detrimental to the institution. Suspension without a hearing shall continue until the disciplinary process is completed. Best efforts will be made to schedule and complete the disciplinary process as promptly as possible.

5. **Dismissal.** The accused student shall be given formal notice in writing by the dean of Oxford College that his/her behavior has been such that he or she is to be dismissed from the college. The dean shall specify either immediate dismissal or dismissal at the end of the semester. The student shall be told when he or she may reapply for admission and the procedure to be followed in making such reapplication. On the date that a student's dismissal becomes effective, the student shall be required to leave the campus promptly and remain off the campus during the period of the dismissal. The student shall forfeit all academic credit and shall not receive any refund of tuition or fees due for the term if he/she is dismissed before the conclusion of the term. If the student is readmitted following dismissal, he/she will be placed on conduct probation for the semester immediately following his or her return to campus. Academic credits earned at other institutions during the period of dismissal may not be transferred to Oxford College for credit toward graduation requirements.
 6. **Expulsion.** The student is dismissed without recourse to apply for readmission.
 7. **Restitution.** The student shall be required to reimburse the college or a member of the college community for expenses resulting from misconduct. This may take the form of appropriate service or other compensation, including monetary compensation.
 8. **Service to the College.** The student shall perform service to the college. The conduct board or conduct investigator shall determine the appropriate amount of time and the nature of this service.
 9. **Personal Performance Record.** The following sanctions will automatically be documented in the student's Personal Performance Record:
 - a. **Expulsion**
 - b. **Dismissal**
 - c. **Conduct Probation**
 - d. **Reprimand** (expunged from the student's Personal Performance Record at a time set by the conduct board or conduct investigator).
- B. When a student is subjected to any of the actions indicated above, a record of the case shall be retained in the conduct file of the associate dean for campus life. If the student is subsequently found guilty of any violation of the conduct code, a record of all previous disciplinary decisions of guilt and penalties will be provided by the associate dean for campus life to the conduct investigator or to the conduct board. The previous record will be considered in deciding the proper disciplinary action to be taken. Students subjected to the disciplinary actions of conduct probation, suspension, or dismissal may be ineligible for scholarships and other forms of financial aid administered by the University.
- C. During the course of the investigation or the course of the hearing, it may be determined by the conduct investigator of the conduct board that a referral to the Oxford College Honor Council may be appropriate. The chairperson of the Conduct Board shall notify the chairperson of the Honor Council that a violation of the Honor Code may have been committed. Thereafter, procedures established in the Honor Code shall be followed. The faculty chairperson of the conduct board shall provide whatever information the Honor Council requires.

Student Honor Code (abridged)

January, 1982

(Revised August 19, 1991)

(Revised April 21, 1992)

Preamble

The responsibility for maintaining standards of unimpeachable honesty in all academic work and in campus judicial proceedings falls upon every individual who is a part of Oxford College of Emory University. The Honor Code is based on the fundamental expectation that every person in Oxford College will conduct his or her life according to the dictates of the Honor Code and will refuse to tolerate actions in others that would violate the Honor Code.

Article 1: Academic Misconduct

Academic misconduct is an offense generally defined as any action or failure to act that is contrary to the integrity and honesty of members of the academic community.

- A. Such offenses include, but are not limited to, the following:
1. seeking, acquiring, receiving, or giving information about the conduct of an examination, knowing that the release of such information has not been authorized
 2. plagiarizing
 3. seeking, using, giving, or obtaining unauthorized assistance in any academic assignment or examination
 4. intentionally misshelving, damaging, or removing library materials without authorization
 5. intentionally giving false information to professors or instructors for the purpose of gaining academic advantage
 6. intentionally giving false evidence in any Honor Council or conduct board hearing or refusing to give evidence when requested by the Honor Council.
 7. intentionally giving unauthorized information regarding hearings of the Oxford College Conduct Board or Honor Council
 8. breach of any duties prescribed by this code
- B. A duty of confidentiality is implicit in the honor system. It is academic misconduct under this code for a member of the Honor Council, a student witness, or any student (other than the accused) who has obtained knowledge of an Honor Council proceeding, past or present, to breach this confidentiality. Nothing in this paragraph shall restrict communications to officials of the university where knowledge is necessary to the performance of the officials' duties nor shall it restrict disclosure required by law.
- C. Harassment of witnesses or anyone involved in an Honor Council hearing before, during, or after the hearing constitutes academic misconduct.

Article 2: Honor Pledge and Obligations

- A. A student's signature on a paper or test submitted for credit shall indicate he or she has neither given nor received unauthorized information on the work, nor has condoned the giving or receiving of unauthorized information by others.
- B. Each student at Oxford College of Emory University agrees to abide by the honor pledge and takes upon himself or herself the responsibility of upholding the Honor Code. Each student is urged to inquire of the Honor Council about any doubtful case at any time throughout the year.

Article 3: Reporting Cases

It is the responsibility of every member of the faculty, administration, and student body to cooperate in supporting the honor system. In pursuance of this duty, any individual, when he or she suspects that an offense of academic misconduct has occurred, shall report the suspected breach to a member of the Honor Council or to the dean.

Article 5: Procedure

Refusal of a witness to testify shall constitute academic misconduct under this code.

Harassment of witnesses shall constitute misconduct under this code.

The following sanctions may be imposed:

1. Honor Council probation for one (1) year: the penalty is automatic on conviction, and the student shall be given formal notice in writing that any further violation shall be sufficient cause for further disciplinary action
2. F in the work involved, with prior consent of the professor
3. F in the course on the student's permanent transcript, with the prior consent of the professor
4. Honor Council Suspension (specifying the period of suspension)
5. Honor Council Dismissal: all courses in process shall receive a grade of W except any course for which an F is recorded under (3) above
6. Honor Council Expulsion
7. Such combination of sanctions or other sanction as may appear appropriate

The findings and recommendations of the Honor Council shall be transmitted to the dean promptly in a concise written report. After receipt of the report, the student shall be promptly notified in writing of the dean's decision and any sanctions imposed. The dean may reject the finding of guilt, but not one of acquittal, may modify the severity of the recommended sanctions, or may require the Honor Council to hold a new hearing.

Plagiarism

The Use of Sources in Writing Research Papers*

A writer's facts, ideas, and phraseology should be regarded as his property. *Any person who uses a writer's ideas or phraseology without giving due credit is guilty of plagiarism.*

*Reprinted by permission of the author, Dr. William B. Dillingham, Emory College.

Information may be put into a paper without a footnote or some other kind of documentation only if it meets all of the following conditions:

It may be found in several books on the subject.

It is written entirely in the words of the student.

It is not paraphrased from any particular source.

It therefore belongs to common knowledge.

Generally, if a student writes while looking at a source or while looking at notes taken from a source, a footnote should be given.

Whenever any idea is taken from a specific work, even when the student writes the idea entirely in his own words, there must be a footnote giving credit to the author responsible for the idea. Of course, methods of documentation vary, and it is possible to cite the source in the text itself rather than a footnote. The point is that the student should give credit in a manner specified by the instructor or the department.

The student is entirely responsible for knowing and following the principles of paraphrasing. "In paraphrasing you are expressing the ideas of another writer in your own words. A good paraphrase preserves the sense of the original, but not the form. It does not retain the sentence patterns and merely substitute synonyms for the original words and merely alter the sentence patterns. It is a genuine restatement. Invariably it should be briefer than the source."*

Any direct quotation should be footnoted (or documented in any acceptable fashion). Even when a student uses only one unusual or key word from a passage, that word should be quoted. If a brief phrase that is common, or somewhat common, is used as it occurs in a source, the words should be in quotation marks. The source of every quotation should be given in a footnote or in the prescribed manner.

It is of course the prerogative of the instructor to prescribe that no secondary sources may be used for particular papers. A student who uses a secondary source must remember that the very act of looking up a book or article should be considered as a pledge that the student will use the material according to the principles stated above.

*Floyd C. Watkins, William Dillingham, and Edwin T. Martin, *Practical English Handbook*, 3d ed. (Boston, 1970) 245.

Changing Courses

A student may change courses during the first five days of classes each semester with the approval of the student's academic adviser. Course-change forms may be obtained from the adviser and must be processed by the Office of Records and Registration.

Dropping Courses

Other than physical education courses, English 101, English 181, and Math 100C, a course may be dropped with no academic penalty during the first five weeks of classes with approval of the student's academic adviser. Drops by merit scholars require approval of

the dean. After the end of the drop/add period, such drops result in the grade of W for the course dropped.

Students who drop a course after the end of the first five weeks for medical or psychological reasons, as corroborated by appropriate documentation, are assigned a W for the course dropped. The associate dean for academic affairs may, for compelling academic reasons and with the recommendation of the student's course instructor and academic adviser, grant a W for a course dropped between the end of the fifth week and the last day of classes. In all other course drops after the first five weeks, the grade assigned is WF, unless the student withdraws from the college (see "Cancellation and Withdrawal").

There is no tuition refund for a dropped course, except in cases of withdrawal from the college before the end of the fifth week of class.

Official Transcripts

Transcripts of a student's record may be obtained from the Office of Records and Registration, by written request of the student, for a minimal charge. Official transcripts, bearing the college seal and validating signature, are not issued to individuals but are mailed, only on request, as confidential information to agencies or institutions. Transcripts include the entire scholastic record; no incomplete or partial transcripts will be issued. Transcript requests should be made at least one week before the transcript is needed. No transcripts or official statements of any kind will be issued for students whose records show financial indebtedness to Oxford College.

Repetition of Courses

Students may not repeat courses that they have passed. However, a student may audit a course previously passed with permission of the course instructor.

Audit Courses

With the permission of the course instructor, students may visit any course for which they have the prerequisites. To receive a grade designation of AU for an audited course, a student must secure audit status within the five-day add period and fulfill requirements of the course instructor appropriate to auditors. The charge for audit courses is the same as for credit courses.

Emory College Courses

An Oxford student may, under exceptional circumstances, enroll in courses in Emory College with the permission of the deans of Oxford and Emory College. Such courses cannot be equivalent to courses offered at Oxford and normally must be courses required of Emory College freshmen and sophomores as prerequisites to a particular academic major or program; moreover, this is a courtesy extended by Emory College on a space-available basis.

Cancellation and Withdrawal

To cancel registration or withdraw from the college at any time other than the close of a semester, a student must secure written permission from the dean or the dean's designee; otherwise, honorable dismissal cannot be granted. A student who withdraws for reasons of illness on the recommendation of the Oxford College Student Health Service receives grades of W in all courses for that semester and must have approval from the Oxford College Student Health Service before being readmitted to the college.

In all other cases, honorable withdrawal from the college after the first five weeks results in grades of W in courses the student is passing and WF in courses the student is failing at the time of withdrawal.

Refunds of tuition, room, and board are only partial. A student may cancel registration through the seventh calendar day after the first day of classes, in which case only the deposit and application fee are forfeited. After the last day for cancellation of registration, a student may withdraw from the college with the appropriate permission. The forfeit for withdrawal increases progressively, but is not less than the forfeit for cancellation. The schedule of forfeits is as follows: during the second week of the semester, 20 percent of tuition charges; during the third week, 40 percent; during the fourth week, 60 percent; and during the fifth week, 80 percent. There are no refunds after the fifth week of the semester. No refund is given if only a part of the work is dropped after the last day for approved course schedule changes specified in the Academic Calendar.

If, in the opinion of the dean,* a student demonstrates evidence of an emotional disorder and has engaged in, or threatened to engage in, conduct that poses a threat to the mental, emotional, or physical well-being of self or others, or to property, and/or impedes the lawful activity of others, the student may be referred to the Oxford College Student Health Service for psychiatric evaluation. Refusal to obtain a psychiatric evaluation, when properly requested to do so, or determination by the Student Health Service that withdrawal would be in the best interest of the student and the university shall be cause for involuntary withdrawal of the student from the college by the dean.

**Dean as used in this statement always refers to the dean or the dean's designee.*

Withdrawal in such cases shall normally incur no academic penalty for the term in which the student is enrolled, and tuition refund, if any, shall be based on the schedule established for voluntary withdrawal. The dean shall inform the student in writing of the effective date of the involuntary withdrawal and shall explain in writing the procedure to apply for readmission to Oxford College. Application for readmission after withdrawal for psychiatric reasons requires evaluation by the university psychiatrist. Persons seeking readmission may choose to submit a written report from a psychiatrist at the individual's own expense. In no case shall readmission be granted after psychiatric withdrawal without the approval of the Oxford College Student Health Service.

A student who withdraws may not continue to live in university housing or participate in student activities, and that student is ineligible for university medical health service.

Involuntary withdrawals, other than for psychiatric reasons, require the student to meet the financial obligations of full-semester tuition. Involuntary withdrawals are those confirmed by the dean of the college on the basis of censure.

Academic Appeals

Students may petition for waivers of existing academic regulations and requirements in individual cases. Such petitions are handled under the guidelines established by the dean and faculty, and should be submitted to the associate dean for academic affairs.

Motor Vehicles

All students using automobiles, motorcycles, and scooters must register their vehicles at the time of enrollment or at the time vehicles are brought on campus. Persons operating vehicles on campus are expected to know and abide by college parking and traffic regulations. A copy of the traffic regulation brochure is given to entering students when they register their vehicle. Failure to abide by these regulations may result in fines and/or other disciplinary measures, including removal of the vehicle at the owner's expense.

Emory University Policy Statement on Discriminatory Harassment

It is the policy of Emory University that all employees and students should be able to enjoy and work in an educational environment free from discriminatory harassment. Harassment of any person or group of persons on the basis of race, color, national origin, religion, sex, sexual orientation, age, disability, or veteran's status is a form of discrimination specifically prohibited in the Emory University community. Any employee, student, student organization, or person privileged to work or study in the Emory University community who violates this policy will be subject to disciplinary action up to and including permanent exclusion from the university.

Discriminatory harassment includes conduct (oral, written, graphic, or physical) directed against any person or group of persons because of their race, color, national origin, religion, sex, sexual orientation, age, disability, or veteran's status and that has the purpose or reasonably foreseeable effect of creating an offensive, demeaning, intimidating, or hostile environment for that person or group of persons. Such conduct includes, but is not limited to, objectionable epithets, demeaning depictions or treatment, and threatened or actual abuse or harm.

In addition, sexual harassment includes unwelcome sexual advances, requests for sexual favors, and other verbal or physical conduct of a sexual nature when:

- submission to such conduct is made either explicitly or implicitly a term or condition of an individual's employment or a student's status in a course, program, or activity;
- submission to or rejection of such conduct by an employee or student is used as the basis for employment or academic decisions affecting that employee or student; or
- such conduct has the purpose or effect of unreasonably interfering with an employee's work performance or a student's academic performance or creating an intimidating, hostile, or offensive employment, educational, or living environment.

All university vice presidents, deans, and division and department chairpersons should take appropriate steps to disseminate this policy statement and to inform employees and students of procedures for lodging complaints. All members of the student body, faculty, and staff are expected to assist in implementing this policy.

The scholarly, educational, or artistic content of any written, oral, or other presentation or inquiry shall not be limited by this policy. It is the intent of this paragraph that academic freedom be allowed to all members of the academic community. Accordingly, this provision shall be liberally construed, but shall not be used as a pretext for violation of this policy.

Any student or employee with a complaint of discriminatory harassment should contact the associate vice president for Equal Opportunity Programs to obtain information on the procedure for handling such complaints. Any questions regarding either this policy statement or a specific fact situation should be addressed to the Emory University Office of Equal Opportunity Programs.

University-Student Relationships

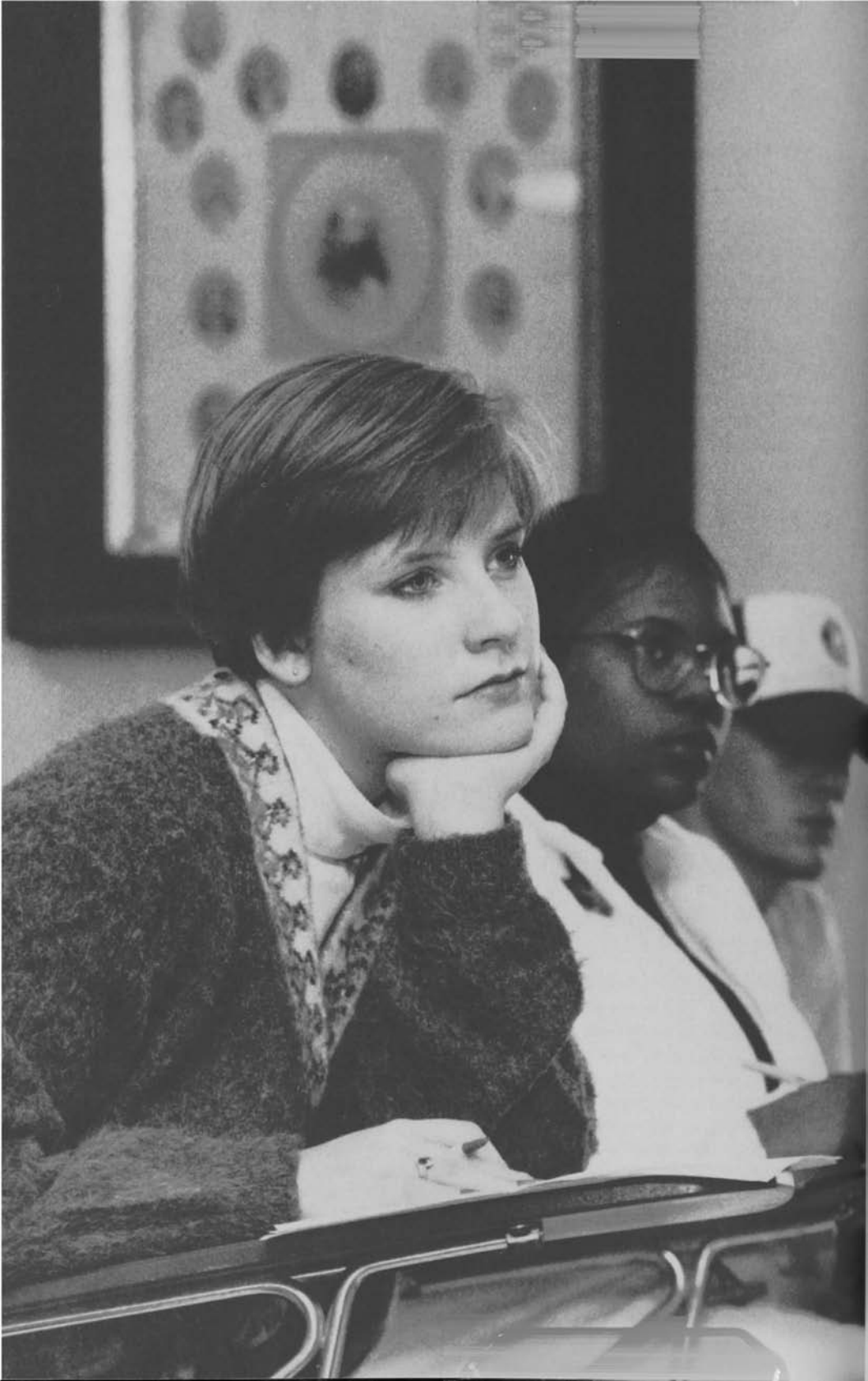
The Board of Trustees of Emory University has adopted a statement of policy dealing with university-student relationships, a digest of which follows.

1. Emory University was founded on Christian principles by the Methodist church and proudly continues its church relationship as an agency dedicated to seeking and imparting truth.
2. Emory University admits qualified students of any sex, sexual orientation, race, color, national origin, age, religion, disability, or veteran's status to all of the rights, privileges, programs, and activities generally accorded or made available to students at Emory University. It does not discriminate on the basis of sex, sexual orientation, age, race, color, national origin, religion, disability, or veteran's status in administration of its educational policies, admission policies, scholarship and loan programs, athletic programs, and other Emory University-administered programs.
3. Attendance at Emory University is a privilege and not a right; however, no student will be dismissed except in accordance with prescribed procedures. Students applying for admission do so voluntarily and are free to withdraw, subject to compliance with the regulations of their schools or colleges governing withdrawal and subject to the fulfillment of their financial obligations to the university.
4. Upon matriculation at Emory, each student agrees to be bound by the rules, policies, procedures, and administrative regulations as they exist at the time of admission and as they may be changed by duly constituted authority.
5. By admission as a student at Emory University, a person acquires the right to pursue the course of study to which he or she is admitted and to be treated with the dignity appropriate to an adult person in all matters relating to the university. In the same spirit, the student shall comply with the rules and regulations of Emory University.
6. Students are provided the opportunity to participate in the development of rules and procedures pertaining to university affairs to the extent that such participation and the results thereof, as determined by the board of trustees or its designated agent, are consistent with orderly processes and with the policies and administrative responsibilities of the board of trustees and the administration.
7. The university expects students to conduct themselves with dignity, courtesy, responsibility, and integrity and with due respect for the rights of others, realizing that sobriety and morality are not only characteristics of a mature and responsible person, but are also essential to the maintenance of a free and orderly society.

8. Membership in and rules governing admission to student organizations shall be determined by the organizations themselves, and such rules shall not be required to be uniform so long as these rules do not contravene any policy established by the board of trustees.

Emory University is an educational institution, not a vehicle for political or social action. It endorses the right of dissent and protects and encourages reasonable exercise of this right by individuals within the university. Because the right of dissent is subject to abuse, the board of trustees and the president have published a statement to clarify policy concerning such abuse, a digest of which follows:

1. Individuals associated with Emory represent a variety of viewpoints. The university fosters the free expression and interchange of differing views through oral and written discourse and logical persuasion.
2. Dissent, to be acceptable, must be orderly and peaceful and represent constructive alternatives reasonably presented.
3. Coercion, threats, demands, obscenity, vulgarity, obstructionism, and violence are not acceptable.
4. Demonstrations, marches, sit-ins, or noisy protests that are designed to or that do disrupt normal institutional pursuits are not permitted.
5. Classes and routine operations will not be suspended except for reasonable cause as determined by the president.
6. Administrators, faculty, other employees, and students are expected to abide by these standards of conduct in promoting their views, particularly dissent.
7. Persons who are not so inclined should not become associated with Emory nor continue to be associated with Emory.
8. Academic and administrative procedures protect individuals in the right of free expression and provide for prompt and appropriate action against those who abuse such right.



Course Descriptions

Humanities

Professors Carpenter, Linville and Oliver; Associate Professors Lemons, Morris, Schulz, and Warburton; Assistant Professors Archetto, Nisbet, and St. Laurent; Visiting Assistant Professors Anderson and Sullivan.

The Division of Humanities offers introductory and basic courses in art, foreign language, literature, music, philosophy, and religion. The division encourages students to evaluate and appreciate our literary, artistic, philosophical, and religious heritage.

Three humanities division courses, taken in at least two departments, fulfill the college's uniform requirements (see page 25). English 181 or English 205 must be included. Foreign language at the 101 level cannot be used to fulfill this requirement unless 102 or higher is completed. English 101, English 399, Music 300R and Religion 371R may not be used to fulfill the distribution requirements in the humanities.

A student planning to concentrate in the humanities at Emory should take at least the beginning courses in his or her chosen field and additional courses in the foreign language and humanities areas, since these courses are frequently required or recommended.

ART HISTORY

Art 101. Art and Architecture from Prehistory to the Renaissance

Fall. Credit, four hours. A survey of architecture, sculpture, painting, and other art forms, with emphasis on significant periods in Western history.

Art 102. Art and Architecture from the Renaissance to the Present

Spring. Credit, four hours. A survey of architecture, sculpture, painting, and other art forms from the Renaissance, with emphasis on the most influential innovators to the present day.

Art 299R. Independent Study

On demand. Variable credit. Prerequisite: permission of instructor. The student will complete a specific individual project designed in consultation with an adviser. This course does not satisfy distribution requirements in humanities.

ENGLISH

Requirements for the major are forty semester hours in English, not including English 101 and English 181. The ten courses taken must include English 205 and seven advanced (300 or 400 level) courses (twenty-eight hours) distributed as follows: two courses in English literature before 1660, one of which may be English 255; two courses in English literature after 1660, one of which may be English 256; two courses in American literature, one of which may be English 250 or 251; one other advanced-level course in British or American literature, drama, or language. Two additional courses (eight hours) may be taken from any of those offered or cross-listed by the Emory College department with the following exceptions: 289 and 496 (Internship) do not count toward the major; no more than eight hours of creative writing may count toward the major. Special topics courses numbered 389 may satisfy requirements for the major if they fall within these guidelines.

Requirements for the minor are twenty-four semester hours in English beyond the 100 level, including English 205 and at least two courses at the 300 or 400 level. English 101, 181, 289, and 496 do not count toward the minor. A 389 course may count if it falls within these guidelines.

Prerequisites

Students must have completed the Uniform Requirement in Literature and Composition by taking English 181 or English 205 before taking any course above the 205 level. The only students who may enroll in 205 are those who have completed 181, placed out of 181 and 205 through advanced placement or transfer credit, or have been given the option of taking 181 or 205.

Placement

Incoming students are recommended for placement in English 101, English 181, or English 181/205 (giving them the option of either). Students with AP credit or transfer credit may place out of the composition courses entirely. Students placed in English 101 must earn a grade of C or better to pass that course and continue in English 181. No student may drop 101 or 181. Students who need to fulfill the Uniform Requirement in Literature and Composition may not drop 205 without adding 181.

English 101. Seminar in Writing

Credit, four hours. Grammar, mechanics, and principles of effective written expression. Primary emphasis on the expository essay. This course does not satisfy the distribution requirements in humanities.

English 181. Writing about Literature

Credit, four hours. Prerequisite: English 101 with a grade of C or better, or permission of the English Department as stated in the placement recommendations. Analysis and appreciation of poetry, fiction, and drama as art forms. Primary emphasis on the critical essay.

English 205. Writing about Poetry

Credit, four hours. Prerequisite: English 181 or permission of the English Department as stated in the placement recommendations. Analysis and appreciation of poetry as an art form. Primary emphasis on the critical essay. Required of English majors and minors.

English 230. History of Drama and Theater I

Credit, four hours. A general history of the theater from its origins through the Renaissance, focusing on representative dramatic works and on the actor, staging, and audience as they have influenced the development of drama and the theater.

English 231. History of Drama and Theater II

Credit, four hours. A general history of the theater from French neoclassicism through the twentieth century, focusing on representative dramatic works and on the actor, staging, and audience as they have influenced the development of drama and the theater.

English 250. Survey of American Literature: Beginnings to 1865

Credit, four hours. Readings in significant American literature up to 1865 with attention to cultural and historical backgrounds.

English 251. Survey of American Literature: 1865 to Present

Credit, four hours. Readings in significant American literature since 1865 with attention to cultural and historical backgrounds.

English 255. Survey of English Literature to 1660

Credit, four hours. Readings in significant English literature up to 1660 with attention to cultural and historical backgrounds.

English 256. Survey of English Literature since 1660

Credit, four hours. Readings in significant English literature since 1660 with attention to cultural and historical backgrounds.

English 260. Survey of World Literature

Credit, four hours. Readings in significant works of the Western literary tradition with attention to cultural and historical backgrounds.

English 311. Shakespeare

Credit, four hours. Selected plays from the histories, comedies, tragedies, and romances.

English 330. Romanticism

Credit, four hours. Selected poems of such romantic poets as Blake, Wordsworth, Coleridge, Byron, Shelley, and Keats. Selections from romantic prose writers such as Hazlitt, DeQuincey, and Lamb.

English 336. The English Victorian Novel

Credit, four hours. The development of the English novel from the latter nineteenth century up to World War I, with representative works by such novelists as Dickens, Eliot, Meredith, Hardy, and Conrad.

English 348. Contemporary Literature

Credit, four hours. Selected works from various genres by British and/or American writers from the 1950s to the present.

English 357. Southern Literature

Credit, four hours. Selected works of major contemporary Southern writers, including Faulkner, Wolfe, Warren, and Welty.

English 381R. Topics in Women's Literature

Credit, four hours. Topics and perspectives vary, but include the political novel or feminist poetics. May be repeated for credit when topic varies.

English 389R. Special Topics in Literature

Credit, four hours. Individual literary topics and problems vary. May be repeated for credit when topic changes.

English 399. Independent Study

Variable credit. For students desiring to pursue a specific individual project of their own design. Students must have project approved by an adviser in advance of preregistration. This course does not satisfy distribution requirements in humanities.

FRENCH

French 101. Elementary French I

Fall. Credit, four hours. First in a series designed to train students to hear, speak, read, and write French. Oral practice emphasized.

French 102. Elementary French II

Spring. Credit, four hours. Continuation of French 101.

French 201. Conversation, Composition, and Reading

Fall. Credit, four hours. Prerequisite: Elementary French II or permission of instructor. Continued development of all language skills. Texts selected to acquaint students with contemporary French.

French 205. Practical Conversation

Spring. Credit, four hours. Prerequisite: French 201 or permission of instructor. Development of fluency in the spoken language through discussion of contemporary issues in French culture. Emphasis on increasing vocabulary and ease in the manipulation of grammatical structures.

French 206R. Composition and Syntax

On demand, with permission of instructor. Credit, two hours. This course is designed to give an intensive review of French grammar and composition.

French 320. Seventeenth-Century French Literature

On demand. Credit, four hours. Designed to trace the development of the classical ideal in French literature and thought of the seventeenth century.

French 323. Twentieth-Century French Literature

On demand. Credit, four hours. French literature from 1900 to the present. The major figures and major works of the period, including Proust, Gide, Camus, and Beckett.

FRENCH COURSES IN TRANSLATION

French 270R. Topics in French Civilization in Translation

(Same as Humanities 270R.) Credit, four hours. Topics announced when course is offered. No knowledge of French required. Readings and discussion in English. May be repeated for credit when topic varies.

French 271R. Topics in French Literature in Translation

(Same as Humanities 271R.) Credit, four hours. Topics to be announced when course is offered. No knowledge of French required. Readings and discussion in English. May be repeated for credit when topic varies.

GERMAN

German 101. Elementary German I

Fall. Credit, four hours. First in a series of courses designed to train students to hear, speak, read, and write German. Oral practice is emphasized and cultural topics are introduced.

German 102. Elementary German II

Spring. Credit, four hours. Continuation of German 101 with an increased emphasis on speaking German. Topics on Germany and German culture.

German 200. Intermediate German I

Fall. Credit, four hours. Prerequisite: Elementary German II or permission of instructor. Systematic review of German grammar; introduction to historical and comparative grammar; practice in writing German prose.

German 201. Intermediate German II

Spring. Credit, four hours. Prerequisite: Intermediate German I or permission of instructor. Intensive practice in using spoken German based on reading of short literary works and an introduction to literary study.

HUMANITIES**Humanities/Theater Studies 200**

Fall, spring. Variable credit. Prerequisite: Previous experience and permission of instructor. (This course is for qualified students who already have demonstrated ability and responsibility in theater at Oxford.) Advanced work in theater to include one of the following: directing, lighting, set design, playwriting.

Humanities 270R. Topics in French Civilization in Translation

(Same as French 270R.) Credit, four hours. Topics to be announced when course is offered. No knowledge of French required. Readings and discussion in English. May be repeated for credit when topic varies.

Humanities 271R. Topics in French Literature in Translation

(Same as French 271R.) Credit, four hours. Topics announced when course is offered. No knowledge of French required. Readings and discussion in English. May be repeated for credit when topic varies.

Humanities 280R. Topics in Spanish Civilization and Culture in Translation

(Same as Spanish 280R.) Credit, four hours. Topics announced when course is offered. No knowledge of Spanish required. Readings and discussion in English. May be repeated for credit when topic varies.

Humanities 281R. Topics in Latin American Civilization and Culture in Translation

(Same as Spanish 281R.) Credit, four hours. Topics announced when course is offered. No knowledge of Spanish required. Readings and discussion in English. May be repeated for credit when topic varies.

Humanities/Literature 291R. Topics in Comparative Literatures of the World in Translation

Fall. Credit, four hours. Representative works of comparative literatures of the world in different genres, from classical to modern times. Emphasis on close reading of particular texts. All readings and discussions in English. Topics announced when course is offered. May be repeated for credit when topic varies.

ITALIAN**Italian 101. Elementary Italian I**

Fall. Credit, four hours. First in a series of courses designed to train students to hear, speak, read, and write Italian. Oral practice is emphasized and cultural topics are introduced.

Italian 102. Elementary Italian II

Spring. Credit, four hours. Continuation of Italian 101 with an increased emphasis on speaking Italian. Topics on Italy and Italian culture.

Italian 201. Intermediate Italian

On demand. Credit, four hours. Prerequisite: Italian 102 or equivalent. Intensive review of basic grammatical structures with refinement of language skills. Texts selected to acquaint students with contemporary Italy.

Italian 202. Advanced Italian

On demand. Credit, four hours. Prerequisite: Italian 201. Continuation of Italian 201 with emphasis on increasing vocabulary and perfecting conversational skills. Topics in Italian civilization are expanded. Designed to give students acceptable command of Italian.

Italian 397. Supervised Reading

On demand. Variable credit. Prerequisite: permission of instructor. Advanced supervised study in the reading of literary texts or other aspects of Italian culture.

MUSIC

Music 101. Introduction to Music

Fall, spring. Credit, four hours. Elementary principles of form and style in music from the sixteenth to the twentieth centuries. No previous experience necessary.

Music 300R. Oxford Chorale/Oxford Instrumental Ensemble

Fall, spring. Credit, one hour. Prerequisite: Permission of instructor. Group instruction in instrumental and/or vocal music and the performance of selected repertoire. May be repeated for credit, with the total credit not to exceed four hours.

Music 389R. Special Topics in Music History

On demand. Credit, four hours. Prerequisite: Music 101 or permission of instructor. This course will focus on selected works of major composers of Western music and on their cultural context. The subjects will include genres such as symphony, sonata, concerto, and opera.

PHILOSOPHY

Philosophy 100. Introduction to Philosophy

Fall, spring. Credit, four hours. Examination of some of the central issues and speculative theories in the philosophical tradition.

Philosophy 110. Introduction to Logic

Fall, spring. Credit, four hours. Introduction to the informal techniques of critical thought and the formal analysis of argument structure.

Philosophy 230. Philosophies of Human Nature

On demand. Credit, four hours. Prerequisite: Philosophy 100, Political Science 101, or permission of instructor. Examination of several theories of human nature drawn from different historical periods. A typical selection might include Plato, Aristotle, Hobbes, Adam Smith, Marx, Skinner, and E. O. Wilson.

Philosophy 250. History of Western Thought I

Fall. Credit, four hours. Ancient and medieval philosophy from the origin of philosophy in ancient Greece to the end of the Middle Ages; emphasis on Plato, Aristotle, St. Augustine, and St. Thomas Aquinas.

Philosophy 251. History of Western Thought II

Spring. Credit, four hours. Modern thought from the Renaissance through the nineteenth century. Readings from such philosophers as Hobbes, Descartes, Locke, Spinoza, Berkeley, Leibniz, Hume, Kant, Hegel, and Nietzsche.

Philosophy 282R. Special Topics in Philosophy

Credit, four hours. Individual topics in philosophy. May be repeated for credit when topic varies.

RELIGION**Religion 100. Introduction to Religion**

Fall. Credit, four hours. An exploration of diverse ways of being religious in thought, action, community, and experience as displayed in two or three traditions and cultures.

Religion 150. Introduction to Sacred Texts

Fall. Alternate years. Credit, four hours. Comparative study of sacred texts in two or more religious traditions and examination of the function of sacred texts in religious communities.

Religion 200. Religion and Contemporary Experience

Spring. Credit, four hours. Religion and contemporary issues of human existence; the role of religion in politics and international conflicts; or the nature of contemporary religious movements such as fundamentalism.

Religion 205. Biblical Literature

Spring. Credit, four hours. The Hebrew Scriptures in translation, examined in their historical setting, together with their application in early Jewish and early Christian (especially New Testament) writings.

Religion 371R. Special Topics in Religious Studies

Variable credit. Prerequisite: one course in religion. Study in depth of a limited historical or theoretical problem. May be repeated for credit when topic varies. This course does not satisfy distribution requirements in humanities.

SPANISH**Spanish 101. Elementary Spanish I**

Fall. Credit, four hours. First in a series of courses designed to train the student to speak, read, and write Spanish. Oral practice is emphasized.

Spanish 102. Elementary Spanish II

Spring. Credit, four hours. Continuation of basic Spanish I.

Spanish 201. Conversation, Reading, and Composition

Fall. Credit, four hours. Prerequisite: Elementary Spanish II or permission of instructor. Continued development of all language skills. Readings in Hispanic culture.

Spanish 202. Intermediate Spanish Review

Spring. Credit, four hours. Prerequisite: Spanish 201 or permission of instructor. Intermediate review of grammar; further development of reading, writing, listening, and speaking abilities through an interactive, communicative method.

Spanish 212. Advanced Conversation

Spring. Credit, four hours. Prerequisite: Spanish 201 or permission of instructor. Continuation of oral work begun in 201. Topics in Hispanic culture and civilization. Designed to give students an acceptable command of Spanish.

Spanish 375R. Topics in Latin American Literature

On demand, with permission of instructor. Credit, four hours. The historical, political, and sociological background of Latin American literature. Specific topics to be announced when the course is offered. May be repeated for credit when topic varies.

Spanish 376R. Topics in Spanish Literature

On demand, with permission of instructor. Credit, four hours. The historical, political, and sociological background of Spanish literature. Specific topics to be announced when the course is offered. May be repeated for credit when topic varies.

SPANISH COURSES IN TRANSLATION

Spanish 280R. Topics in Spanish Civilization and Culture in Translation

(Same as Humanities 280R.) Credit, four hours. Topics to be announced when course is offered. No knowledge of Spanish required. Readings and discussion in English. May be repeated for credit when topic varies.

Spanish 281R. Topics in Latin American Civilization and Culture in Translation

(Same as Humanities 281R.) Credit, four hours. Topics to be announced when course is offered. No knowledge of Spanish required. Readings and discussion in English. May be repeated for credit when topic varies.

Natural Science and Mathematics

Professors McKibben, Murdy, and Sharp; Associate Professors Ali, E. C. Bailey, R. E. Bailey, Baird, Carter, Henderson, Parker, and Saadein; Assistant Professors Baker and Rogers; Visiting Assistant Professor Cashin; Instructor Frady; Lecturer Riner; and Biology Lab Coordinator Wade.

Natural science includes astronomy, biology, chemistry, geology, and physics. Three four-semester-hour courses are required, distributed as follows: (1) one laboratory science course (astronomy, biology, chemistry, geology/geography, physics); (2) one course in mathematics or computer science, with number greater than or equal to 107 and with the exception of Math 119; and (3) one additional course from those specified in (1) or those specified in (2). Biology 199, Biology 285R, Computer Science 297R, Geology 199R, Math 100C, Math 101, Math 297R, and Physics 297R may not be used to fulfill the distribution requirements in natural science and mathematics. A student concentrating in natural science at Emory should take a minimum of two courses in his or her chosen field, two courses in an allied science, and basic mathematics courses at Oxford. A student concentrating in mathematics or mathematics/computer science should complete at least Math 112, Computer Science 170, and Math 221 before continuing at Emory.

ASTRONOMY

Astronomy 116. Introductory Astronomy with Laboratory

Yearly. Credit, four hours. Prerequisites: Chemistry 100, Chemistry 141, or permission of instructor; Math 101, a higher-numbered mathematics or computer science course, or Math 111 placement. Fundamental concepts and principles of astronomy. Laboratory or observing session weekly.

BIOLOGY

Biology 111. Environmental Science with Laboratory

Fall, spring. Credit, four hours. Basic ecological concepts: trophic structure, energy flow, biogeochemical cycles, and population phenomena. Laboratories include field trips and studies of terrestrial and aquatic ecosystems. Primarily for nonmajors. Equivalent to HNE120 for Human/Natural Ecology comajors. Three hours of lecture and one three-hour laboratory per week.

Biology 120. Concepts in Biology with Laboratory

Fall, spring. Credit, four hours. Principles of genetics, physiology, taxonomy, and evolution with special reference to contemporary life situations. Intended for nonscience majors. Three hours of lecture and one three-hour laboratory per week. This course does not fulfill requirements for medical and dental schools.

Biology 121, 122. Human Anatomy with Laboratory, and Physiology I and II with Laboratory

Fall, spring. Credit, four hours each semester. Prerequisite: for Biology 122, Biology 121. These courses emphasize the structure and function of the human body and are taught using a systemic approach incorporating both anatomy and physiology. Biology 121 includes a survey of body tissues and the muscular, skeletal, and nervous systems. Biology 122 continues with the endocrine, circulatory, respiratory, immune, digestive, urinary, and reproductive systems. Labs in both courses involve dissection, study of human specimens, and basic experiments in physiology. The two-course sequence is required for prenursing and for many allied health programs. Interested students and those planning study in anthropology, psychology, kinesiology, recreation, or physical education would find these courses helpful. Three hours of lecture and one three-hour laboratory per week.

Biology 141. General Biology I with Laboratory

Fall, spring. Credit, four hours. No prerequisite. The first course in general biology sequence. The study of living systems at the molecular and cellular levels of organization, and the biology of plants. Major topics include photosynthesis, respiration, reproduction, and genetics. Principles of evolution and ecology are stressed. Three hours of lecture and one three-hour laboratory per week.

Biology 142. General Biology II with Laboratory

Fall, spring. Credit, four hours. Prerequisite: Biology 141. The second course in general biology sequence. The study of morphology, physiology, ecology, and evolution of the major invertebrate phyla and the chordates, with special emphasis on the vertebrate chordates. Three hours of lecture and one three-hour laboratory per week.

Biology 199. Independent Study

On demand. Variable credit. Prerequisite: Permission of instructor. Independent study for students who have taken at least one course in biology. Requires an independent project. This course does not satisfy distribution requirements in natural science and mathematics.

Biology 235. Field Botany with Laboratory

Spring. Credit, four hours. Prerequisite: Biology 141, 120, or permission of instructor. Students need to have a basic understanding of plant structure. Study of plants in their natural habitats, including plant morphology, ecology, and fundamentals of taxonomy. Three hours of lecture and one three-hour laboratory per week.

Biology 285R. Special Topics in Biology

Variable credit. Prerequisite: Permission of instructor. Seminar or advanced course in selected biology topics. May be repeated for credit when topic varies. This course does not satisfy distribution requirements in natural science and mathematics.

CHEMISTRY

Chemistry 100. Introductory Chemistry with Laboratory

Fall. Credit, four hours. Introduction to chemistry and its applications. Topics include matter, energy, gases, solutions, and acids and bases, with some quantitative problem solving. Three hours of lecture and one laboratory per week. This course is designed primarily for prenursing students and nonscience majors. Chemistry 100 is not open to students who have credit for Chemistry 141.

Chemistry 120. Selected Topics in Chemistry with Laboratory

Spring. Credit, four hours. Prerequisite: Chemistry 100/141. Designed primarily for prenursing students and nonscience majors. Survey of organic chemistry and its utility in the health sciences. Three hours of lecture and one three-hour laboratory per week.

Chemistry 141. General Chemistry I with Laboratory

Fall. Credit, four hours. Prerequisite: Math 100C or placement by the Mathematics Department in a higher math course. Laws and theories of chemistry, atomic and molecular structure, chemical bonding, stoichiometry, gases, liquids, solids, and properties of solutions. A working knowledge of algebra is required. Three hours of lecture and one three-hour laboratory per week.

Chemistry 142. General Chemistry II with Laboratory

Spring. Credit, four hours. Prerequisite: Chemistry 141. Equilibrium, kinetics, acids and bases, electrochemistry, chemical properties of metals and nonmetals, and qualitative analysis. Three hours of lecture and one three-hour laboratory per week.

Chemistry 221. Organic Chemistry I

Fall. Credit, four hours. Prerequisite: Chemistry 142. Classes of organic compounds, bonding, stereochemistry, structure and reactivity, nucleophilic substitution reactions, and elimination reactions. Three hours of lecture per week.

Chemistry 221L. Basic Organic Chemistry Laboratory I

Fall. Credit, one hour. Taken with Chemistry 221. One three-hour laboratory per week.

Chemistry 222. Organic Chemistry II

Spring. Credit, four hours. Prerequisite: Chemistry 221. Classes of organic compounds, electrophilic aromatic substitution reactions, and nucleophilic aromatic substitution reactions. Three hours of lecture per week.

Chemistry 222L. Basic Organic Chemistry Laboratory II

Spring. Credit, one hour. Prerequisite: Chemistry 221L. Taken with Chemistry 222. One three-hour laboratory per week.

Chemistry 260. Quantitative Analytical Chemistry with Laboratory

Spring. Credit, four hours. Prerequisite: Chemistry 221 or permission of instructor. Analytical techniques including atomic and molecular spectroscopy, gas and liquid chromatography, and electrochemistry. Statistical analysis of chemical data, including model fitting using regression. Three hours of lecture and one three-hour laboratory per week.

Chemistry 297R. Directed Study

On demand. Variable credit. Prerequisite: permission of instructor. Directed study for students who have taken at least one course in chemistry. Selected chemistry topics. May be repeated for credit when topic varies. Credit to be arranged. This course does not satisfy distribution requirements in natural science and mathematics.

GEOLOGY

Geology 100N. Desert Geology

Off-campus course. Interim or summer. Credit, four hours. Prerequisite: Permission of instructor. Additional tuition is required. Study of the climatologic origin and the geomorphology of deserts. Also includes morphological, physiological, and behavioral adaptations to life in a dry environment, and study of the ecological zones and geology of Big Bend National Park. Classes meet weekly during the semester, followed by a ten-day field trip to Chihuahuan Desert in Big Bend National Park, Texas.

Geology 141. Physical Geology with Laboratory

Fall. Credit, four hours. No prerequisite. General geologic principles and concepts, especially as they apply to earth processes and earth resources. Three hours of lecture and one three-hour laboratory per week.

Geology 142. Historical Geology with Laboratory

Spring. Credit, four hours. No prerequisite. Orderly sequence of events that have occurred in and on the crust of the earth through geologic time. Special emphasis on the geologic history of North America. Three hours of lecture and one three-hour laboratory per week.

Geology 199R. Independent Study

On demand. Variable credit. Independent study for geology majors who have taken Geology 141, 142. Requires an independent project approved by the instructor. This course does not satisfy distribution requirements in natural science and mathematics.

Geography 141. Meteorology and Climatology with Laboratory

Spring. Credit, four hours. No prerequisite. The nature of the atmosphere, meteorological processes, and climatic regions of the world, including botanical zonation and climatic factors influencing people and nations. Three hours of lecture and one three-hour laboratory per week.

PHYSICS

Physics 141. Introductory Physics I with Laboratory

Fall. Credit, four hours. Prerequisite: Math 111 or equivalent. Elementary course covering the principles of mechanics, heat, thermodynamics, and wave motion. Methods of calculus are introduced and used where appropriate. Three hours of lecture and one three-hour laboratory per week.

Physics 142. Introductory Physics II with Laboratory

Spring. Credit, four hours. Prerequisite: Physics 141. Optics, electricity and magnetism, and atomic and nuclear physics. Three hours of lecture and one three-hour laboratory per week.

Physics 151. General Physics: Mechanics with Laboratory

Fall. Credit, four hours. Corequisite: Mathematics 112 and permission of the instructor. A calculus-based introductory course covering mechanics, thermodynamics, and wave motion. Three hours of lecture and one three-hour laboratory per week.

Physics 152. General Physics: Electricity, Magnetism, and Optics with Laboratory

Spring. Credit, four hours. Prerequisite: Physics 151. A continuation of Physics 151 covering electricity, magnetism, and geometric and wave optics. Three hours of lecture and one three-hour laboratory per week.

Physics 297R. Directed Study

On demand. Variable credit. Prerequisite: Permission of instructor. Topics and credit to be arranged. This course does not satisfy distribution requirements in natural science and mathematics.

MATHEMATICS AND COMPUTER SCIENCE

The Mathematics Department provides placement information to academic advisers for each entering student. This information is based on the student's performance on the mathematics placement test, the student's high school record, and SAT (or ACT) scores. Students who wish to have their placements reviewed should see the appropriate member of the mathematics faculty.

Mathematics 100C. Introduction to College Mathematics

Fall, spring. Credit, two hours. Registration is by permission of the Mathematics Department. This course is designed for students who need to strengthen their mathematical backgrounds before entering regular college mathematics courses. The course includes a review of algebra and topics from discrete mathematics. Students attend three hours of lecture and one two-hour special session (laboratory) per week. This course may not be taken for credit by students who have received credit for another mathematics course. Students who successfully complete Math 101 will lose prior credit for Math 100C.

Mathematics 101. Trigonometry and Algebra

Fall, spring. Credit, four hours. Prerequisite: Permission of Mathematics Department as stated in placement recommendations or Math 100C and permission of the instructor. This course does not satisfy distribution requirements in natural science and mathematics. Basic concepts of functions, algebra, and analytic geometry.

Mathematics 107. Introduction to Probability and Statistics

Fall, spring. Credit, four hours. Prerequisite: Math 100C, Math 101, or permission of the Mathematics Department as stated in placement recommendations. Basic concepts in counting, probability, hypothesis testing, linear regression, and correlation, with applications. This course is computer-assisted, but prior knowledge of computers is not expected.

Mathematics 111T. Calculus I with Laboratory

Fall. Credit, four hours. Prerequisite: freshmen students only, according to placement by the Mathematics Department. Calculus I material with an intensive, integrated study of trigonometric, logarithmic, and exponential functions. Three hours of lecture and one-and-a-half hours of laboratory per week.

Mathematics 111, 112. Calculus I and II

Fall, spring. Credit, four hours each semester. Prerequisite: for Math 111, permission of the Mathematics Department as stated in placement recommendations, or completion of Math 101 with a grade of C or better. This sequence includes differential and integral calculus of algebraic and transcendental functions of one variable, with applications and infinite series, including power series.

Mathematics 112S. Calculus II

Fall. Credit, four hours. Prerequisite: Freshmen only, by invitation of the Mathematics Department in accordance with placement. Topics in Mathematics 112 with a review of introductory concepts.

Computer Science 150. Introduction to Computers and Programming with Laboratory

Fall, spring. Credit, four hours. Prerequisite: Math 100C, Math 101, or permission of the Mathematics Department as stated in placement recommendations. Introduction to programming in the C language with emphasis on applications in several disciplines. Three hours of lecture and a one-hour laboratory per week.

Computer Science 170. Introduction to Computer Science with Laboratory

Fall or spring. Credit, four hours. Prerequisite: CS 150, or permission of the Mathematics Department as stated in placement recommendations. The first course for potential math/computer science majors, covering an introduction to computer architecture, an introduction to software engineering, the UNIX operating system, and C language. Three hours of lecture and a one-hour laboratory per week.

Mathematics 207. Probability and Statistics

Fall or spring. Credit, four hours. Prerequisite: Math 112 or permission of instructor. Development and use of mathematical models from probability and statistics, with applications.

Mathematics 211. Multivariable Calculus

Fall. Credit, four hours. Prerequisite: Math 112. Vectors, multivariable functions, partial derivatives, multiple integrals, vector and scalar fields, Green's and Stokes's theorems, and divergence theorem.

Mathematics 212. Differential Equations

Spring. Credit, four hours. Prerequisite: Math 112. Ordinary differential equations with applications.

Mathematics 221. Linear Algebra

Spring. Credit, four hours. Prerequisite: Math 112 or permission of instructor. Systems of linear equations and matrices, determinants, linear transformations, vector spaces, eigenvalues, and eigenvectors.

Mathematics 297R. Directed Study

On demand. Variable credit. Topics and credit to be arranged. This course does not satisfy distribution requirements in natural science and mathematics.

Computer Science 297R. Directed Study

Same as Mathematics 297R.

Physical Education and Dance

Professors England, Greer, and Shappell; Assistant Professors Darracott and Doherty.

The Division of Physical Education and Dance offers students the opportunity to develop a greater awareness of their human movement potential and its relationship to their present and future well-being. The curriculum is designed to expose students to various courses, programs, and activities that lead to maintenance of a healthy body, acquisition of particular motor skills, aesthetic appreciation of movement, competitive/cooperative use of leisure time, sheer kinesthetic pleasure, and a “body” of knowledge about physical activity.

Students are required to take one one-semester-hour course for each semester in residence with a maximum of four courses required. These courses must include one from each of three areas (aquatics, health/fitness, and lifetime activities). Students may not take more than one physical education course per semester unless a course has been failed. The intent is to promote physical activity each semester in residence.

No exceptions are made for the physical education requirement. If a student is disabled or in some way incapacitated due to illness prior to registration, the student must enroll in a course under one of the three emphasis areas. The courses will be adjusted to fit the needs of the student so that the student can meet the Uniform Requirements (see page 25). If a student is incapacitated while enrolled in a course, adjustments for completing the course will be made.

Periodically, the physical education faculty will offer, on request, a cardiopulmonary resuscitation (CPR) course to students and staff. This course carries no credit, but meets the certification requirements of the American Red Cross.

This division, in addition to curricular responsibilities, organizes and directs intramural programs, recreational programs, sports clubs, and the Oxford College Dance Company.

SPECIAL COURSES

Physical Education 199. Directed Study

Fall, spring. Credit, one hour. Independent study of listed activities at the advanced level. Student must have permission of faculty member to enroll. Activity planned and executed by the individual student under faculty guidance. Students must have had the basic course in the area of their intended advanced study. May be taken under any of the three areas, but may be taken only once. This course does not satisfy area requirements in physical education.

HEALTH/FITNESS AREA

Physical Education 100. Health/Conditioning

Fall, spring. Credit, one hour. Basic physiological principles for the development of cardiovascular health, flexibility and muscle strength, and endurance. Concepts of preventive medicine, wellness, nutrition, body composition, and weight control. Individualized exercise program.

Physical Education 101. Weight Training

Fall, spring. Credit, one hour. Physiological basis of weight training. Skeletal muscle anatomy and

physiology. Includes nutrition, weight control and body composition, and concepts of the development of cardiovascular health. Individualized exercise program.

Physical Education 104. Water Aerobics

Fall, spring. Credit, one hour. Basic principles for the development of cardiovascular health, flexibility and muscle strength, and endurance. Concepts of nutrition, body composition, and weight control. Individualized water-exercise program. The student should have average swimming ability and should be comfortable in deep water.

Physical Education 106. Aerobic Movement and Dance Exercise

Fall, spring. Credit, one hour. Combines cardiovascular exercise with fundamentals of rhythm and basic movement, basic principles for the development of cardiovascular endurance, flexibility and muscle strength, and endurance. Concepts of preventive medicine and nutrition. Effects of drugs on physical performance may be included.

Physical Education 220R. Topics in Health/Fitness

On demand, with permission of instructor. Credit, one hour. Specific topic(s) to be announced when course is offered. Counts toward health/fitness area.

AQUATICS AREA

Physical Education 110. Beginning Swimming

Fall, spring. Credit, one hour. Prerequisite: Permission of instructor. Development of swimming skills for the nonswimmer to American Red Cross Level III skills. Includes American Red Cross CPR and Standard First Aid. Drownproofing techniques that are effective even without the use of one or more limbs are stressed.

Physical Education 111. Intermediate Swimming

Fall, spring. Credit, one hour. Development of swimming skills for the poor or average swimmer to American Red Cross Level VI skills. Includes American Red Cross CPR and Standard First Aid. Drownproofing techniques that are effective even without the use of one or more limbs are stressed. Swimming-skills test and instructor's judgment determine enrollment in class.

Physical Education 112. Lifeguard Training

On demand. Credit, one hour. Focuses on accomplished swimmers. Skills test given first class day to qualify for class. Covers skills and knowledge required for effective lifeguarding at swimming pools and nonsurf, open-water beaches. Includes American Red Cross CPR and Standard First Aid.

Physical Education 113. Lifeguard Training Instructor

On demand. Credit, one hour. Prerequisite: American Red Cross Advanced Lifesaving Certificate and permission of instructor. Course complies with standards required by American Red Cross. ARC Lifeguard Training Instructor Certificate issued. This course may count toward either the aquatics or the lifetime activities area. It cannot be counted in both areas.

Physical Education 210R. Topics in Aquatics

On demand, with permission of instructor. Credit, one hour. Specific topic(s) to be announced when course is offered. Counts toward aquatics area.

LIFETIME ACTIVITIES AREA

Physical Education 113. Lifeguard Training Instructor

(See Aquatics Area)

Physical Education 118. Cycling

Fall, spring. Credit, one hour. Basic cycling technique, safety factors, and simple cycle maintenance. Students must furnish bicycles.

Physical Education 120. Skin and Scuba Diving

Fall, spring. Credit, one hour. Techniques and requirements for scuba-diving certification. Student must display proficient water skills to be enrolled and must provide a physician's approval for taking scuba at the first class meeting. Each student enrolled will be charged an equipment fee payable on the first day of class. Certification in Scuba Diving (P.A.D.I.) is not a part of the Skin and Scuba Diving course at Oxford College. Certification is not computed in the final grade. Those seeking certification do so on their own, and an extra fee (travel, equipment) is charged. Thus, a student wishing to become certified does not do so as an Oxford College student. Such persons bear all the responsibilities and waive all claims against Oxford College.

Physical Education 121. Recreational Dance

Fall, spring. Credit, one hour. A survey of selected European and American folk dances and ballroom dances related more to social and recreational skill development than to dance performance.

Physical Education 122. Beginner/Advanced Beginner Tennis

Fall, spring. Credit, one hour. History, rules, ground strokes, serve, volley, lob, and singles and doubles strategy and play. Appropriate USTA Skill Tests are administered and ratings are established according to the National Tennis Rating Program.

Physical Education 123. Intermediate/Advanced Tennis

Fall, spring. Credit, one hour. Prerequisite: Physical Education 122 or permission of instructor. Review of basic strokes, advanced strokes, singles and doubles strategies and competition, tournament organization and officiating techniques, and contemporary competition. Appropriate USTA Skill Tests are administered and ratings are established according to the National Tennis Rating Program.

Physical Education 125. Badminton

Fall, spring. Credit, one hour. Basic skills, rules, and strategy for playing singles, doubles, and mixed doubles.

Physical Education 126. Beginning Golf

Fall, spring. Credit, one hour. Development of basic golf swing, chipping, and putting. Basic rules necessary to play game. Student must furnish clubs.

Physical Education 131. Ballet/Jazz

Spring. Credit, one hour. Introduction to basic techniques of ballet and jazz dance. Basic elements of composition and dance history will be taught.

Physical Education 132. Beginning Modern Dance

Fall. Credit, one hour. Introduction to basic techniques of modern dance and training in the basic elements of composition and dance history.

Physical Education 200R. Topics in Lifetime Activities

On demand, with permission of instructor. Credit, one hour. Specific topic(s) to be announced when course is offered. Counts toward lifetime activity area.

History and Social Sciences

Professors Penn and Shapiro; Associate Professors Cody, Lewis, McQuaide, Owen-Smith, and Wundram; Assistant Professors Carter, Leinweber, and Maddox.

The need for students to acquire knowledge of the enduring values of Western civilization and of concepts that underlie these values imbues the purposes of the History and Social Sciences Division. This purpose presumes that responsible members of society can develop only from persons who understand their roots and whose convictions are the result of critical thought rather than simple acculturation. This is the foundation for the disciplines of the division, which also provide the academic basis for a variety of professional and vocational options.

In addition, the departments of the division cooperate to offer a sophomore honors program in the social sciences. Enrollment is by invitation only; registration is accomplished by utilizing the respective special topics numbers of the departments: 385, with the suffix H (389 in sociology). Course content varies.

Anthropology 397R, Business 210, Political Science 397R, Psychology 385R, and Sociology 397R may not be used to fulfill the distribution requirements in history and social sciences.

ANTHROPOLOGY

Anthropology 101. Introduction to Anthropology

Fall, spring. Credit, four hours. Survey of the study of the human species: biocultural evolution, prehistory, language, and comparative social and cultural systems.

Anthropology 116Q. Field Studies in Native American Cultures

Off-campus course. Interim or summer. On demand. Credit, four hours. No prerequisite. A study of a selected Native American culture through readings in ethnology and archaeology, culminating in travel throughout the geographic area of that culture. An off-campus travel course with classes on campus during the preceding semester.

Anthropology 201. Foundations of Biological Anthropology and Archaeology

Fall. Credit, four hours. Prerequisite: Anthropology 101 or permission of instructor. Evolution of the human species, fossil populations, human variation, and primate behavior. Techniques of archaeological excavation and analysis, survey of the prehistoric evolution of cultures, and contemporary issues in archaeology. Weekly lab in biological anthropology and archaeology methods.

Anthropology 202. Foundations of Cultural Anthropology and Linguistics

Spring. Credit, four hours. Prerequisite: Anthropology 101 or permission of instructor. Basic concepts and theories of cultural anthropology and linguistics. Comparative economic and political systems, social organization and the family, belief systems, and modes of communication. Diverse levels of sociocultural complexity, from primitive tribes to contemporary U.S.

Anthropology 240. Primate Behavior and Human Ethology

Spring, alternate years. Credit, four hours. Prerequisites: Anthropology 101, 201, or permission of instructor. A survey of living, nonhuman primates from ecological and behavioral perspectives, with special emphasis on the behavioral biology of the human species.

Anthropology 250. North American Indians

Spring, alternate years. Credit, four hours. Prerequisite: Anthropology 101, 201, or 202, or permission of instructor. North American Indians (native cultures of North America) covers all the major Native American groups from the Isthmus of Panama to the Arctic Circle. The course covers pre-historic to modern times: environmental adaptations, social customs, religion, art, and other aspects of American Indian cultures, including change resulting from contact with Europeans and the situation of Native Americans today.

Anthropology 385R. Special Topics in Anthropology

On demand. Credit, four hours. Prerequisites: Anthropology 101 and permission of instructor and of the chair of History and Social Sciences Division. Seminar or lecture series in topics of special anthropological concern. May be repeated for credit when topic varies.

Anthropology 397R. Directed Study

On demand. Variable credit. Prerequisites: Anthropology 101 and permission of instructor. Independent reading and research under the direction of a faculty member. Students must submit, for instructor approval, a one-page written proposal of the work to be done. This course does not satisfy distribution requirements in history and social sciences.

BUSINESS

Business 210. Financial Accounting

Fall. Credit, four hours. Basic principles, procedures, and objectives of accounting systems. Emphasis is placed on the necessity of accounting and an appraisal of strengths and weaknesses of accounting data. This course does not satisfy distribution requirements in history and social sciences.

ECONOMICS

Economics 101. Principles of Microeconomics

Fall, spring. Credit, four hours. Use of economic analysis to explain resource allocation, output, and income distribution in a market economy.

Economics 112. Principles of Macroeconomics

Fall, spring. Credit, four hours. Introduction to economic analysis and its use in explaining levels of national income, employment, and price levels.

Economics 201. Intermediate Microeconomics

Fall, spring. Credit, four hours. Prerequisites: Economics 101, 112, Math 111, or permission of instructor. Contemporary theory that positions itself between beginning principles and work in theory at the graduate level, primarily treating economic theory as it relates to consumers, business enterprises, and factor markets.

Economics 212. Intermediate Macroeconomics

Fall, spring. Credit, four hours. Prerequisites: Economics 101, 112, Math 111, or permission of instructor. The economy as a whole; factors that determine overall employment levels, national income, and output; economic fluctuation; macromonetary theory; the general price level; the rate of economic growth; and international income relationships.

Economics 351. European Economic History I

Same as History 351.

Economics 352. European Economic History II

Same as History 352.

Economics 385R. Special Topics in Economics

On demand. Credit, four hours. Prerequisites: Minimum of one economics course; permission of instructor and chair of the History and Social Sciences Division. Course may be repeated for credit when topic varies. Seminar and/or advanced course in selected topics in economics.

HISTORY

History 101. History of Western Civilization I

Fall or spring. On demand. Credit, four hours. Survey of political, economic, social, and cultural history of the West from the classical period through the Reformation. Emphasis on contributions of Greco-Roman civilization; barbarian invasions and disorder of the early Middle Ages; flowering and collapse of high medieval civilization; the Renaissance revival; and the religious crises of the Reformation.

History 102. History of Western Civilization II

Fall, spring. Credit, four hours. Survey of political, economic, social, and cultural history of the West from the Age of Absolutism to the present. Emphasis on emergence of the nation-state; the scientific revolution and Enlightenment; French and industrial revolutions; development of romanticism, liberalism, nationalism, and imperialism; the Russian Revolution; totalitarian ideologies and the world wars; and development of the Western democracies.

History 133. United States History, Colonial to Present

On demand. Credit, four hours. Survey of the political, economic, social, intellectual, and international developments of the American nation and its people from European colonization through modern times.

History 328. History of the Christian Church

On demand. Credit, four hours. The Christian church in the West from the Apostolic Age to the Reformation, with emphasis on the interaction of the church and society.

History 341. The Era of the American Revolution

On demand. Credit, four hours. Prerequisite: Permission of instructor. Study of the American Revolution with an emphasis on its causes and consequences, concentrating on the period from 1763 to 1789.

History 348. The South in American History

On demand. Credit, four hours. Development of the South and its significance in the history of the nation.

History 351. European Economic History I

On demand. Credit, four hours. Prerequisite: History 101 or permission of instructor. A study of the major issues and trends that characterize European economic history from antiquity until the end of the early modern era.

History 352. European Economic History II

On demand. Credit, four hours. Prerequisite: History 102 or permission of instructor. A study of the major issues, events, and trends that characterize European economic history during the Early Modern and Modern eras.

History 385R. Special Topics in History

On demand. Credit, four hours. Prerequisites: Minimum of one history course; permission of instructor and chair of the History and Social Sciences Division. Seminar and/or advanced course in selected history topics. May be repeated for credit when topic varies.

POLITICAL SCIENCE

Political Science 101. Introduction to Political Science

Fall, spring. Credit, four hours. Approaches to the study of politics; concepts of political science; comparison of political systems; and democratic and authoritarian systems of government. Prerequisite to all other political science courses.

Political Science 100. National Politics in the United States

On demand. Alternate years. Credit, four hours. Prerequisite: Political Science 101. Origins, principles, structures, processes, and practices of American national government. Emphasizes different perspectives of democratic theory and practice, and the adequacy of governmental institutions.

Political Science 110. Introduction to International Politics

On demand. Credit, four hours. Prerequisite: Political Science 101. Introduction to analytical concepts, the nature of the interstate system, the assumptions and ideas of diplomacy, and the determinants of foreign policy.

Political Science 301. Classical Political Thought

Fall. Credit, four hours. Prerequisite: Political Science 101 or permission of instructor. Beginnings of the Western political heritage as shaped by the great political thinkers from Plato to Marsilius.

Political Science 302. Modern Political Thought

Spring. Credit, four hours. Prerequisite: Political Science 101, 301, or permission of instructor. Political thought in the modern period, from Machiavelli through the nineteenth century.

Political Science 303. American Political Thought to 1912

Spring. Credit, four hours. Prerequisite: Political Science 101 and permission of instructor. History of American political thought from the founding to the Progressives, with primary attention to views on democracy, liberty, equality, property, and the Union.

Political Science 306. Human Nature in Politics from the Feminine Perspective

Spring. Alternate years. Credit, four hours. Prerequisite: Political Science 101 or permission of instructor. A survey course in political philosophy, ancient to modern. Investigation of the theme of human nature from the feminine perspective.

Political Science 352. Constitutional Law

On demand. Credit, four hours. Prerequisite: Political Science 101 and permission of instructor. Basic principles of the Constitution and powers of the national and state governments, examined through Supreme Court decisions and secondary works.

Political Science 385R. Special Topics in Political Science

On demand. Credit, four hours. Prerequisite: Political Science 101 and permission of instructor and of the chair of the History and Social Sciences Division. May be repeated for credit when topic

varies. Seminar and/or advanced class in selected topics of political science. Primarily for students interested in politics.

Political Science 397R. Directed Study

On demand. Variable credit. Prerequisites: Political Science 101, two other political science courses, and permission of instructor. Independent reading and research under the direction of a faculty member. This course does not satisfy distribution requirements in history and social sciences.

PSYCHOLOGY

Psychology 100. Introductory Psychology

Fall, spring. Credit, four hours. Survey of central issues, basic theories, and research in psychology. Areas covered include development, learning, biological bases of behavior, perception and sensory process, personality, emotion, motivation, abnormal behavior, and social psychology.

Psychology 200. Laboratory in Experimental Methods

Spring. Credit, four hours. Prerequisite: Psychology 100. Introduction to basic methods and design of psychological research. Laboratory exercises and fundamentals of scientific writing are emphasized.

Psychology 205. Human Development

Fall, spring. Credit, four hours. No prerequisite. Principles applicable to growth and development across the life span. Emphasis on cognitive and social development from conception through adulthood.

Psychology 207. Brain and Behavior

On demand. Credit, four hours. Prerequisite: Psychology 100. The biological basis of intelligence, learning and memory, hunger and thirst, sexual behavior, and sleep and pain. The course also covers the effects of psychoactive drugs.

Psychology 208. Psychology of Women

Spring. Credit, four hours. Prerequisite: Psychology 100. Exploration of women's experience and issues in the context of psychological theory and research. Emphasis on the critical examination, reanalysis, and reinterpretation of numerous concepts in psychology.

Psychology 211. Personality Theories

Spring. Credit, four hours. Prerequisite: Psychology 100. Examination of the major personality theories as well as focus on the following topics: love and attraction, sex roles, aggression, stress, intelligence, altruism, and authoritarianism.

Psychology 212. Social Psychology

Same as Sociology 212.

Psychology 221. Human Sexuality

Fall, spring. Credit, four hours. Prerequisite: Psychology 100 or Psychology 205. Explorations of physiological and sociocultural aspects of sexuality, including sexual response, sexual desire, sexual development, sexual preference, reproduction, and sexual deviance and problems.

Psychology 385R. Special Topics in Psychology

On demand. Variable credit. Prerequisites: at least one 100-level psychology course and permission of instructor. Seminar in selected topics of psychology or directed individual course of study. May be repeated for credit when topic varies. This course does not satisfy distribution requirements in history and social sciences.

SOCIOLOGY

Sociology 101. Introduction to Sociology

Fall, spring. Credit, four hours. Introduction to the scientific study of human group behavior. Emphasis on definition of analytical concepts and tools for the exploration of significant data in social organizations, culture, institutions, and social change.

Sociology 212. Social Psychology

Spring. On demand. Credit, four hours. Prerequisite: Sociology 101 or Psychology 100. The relation of the individual to society; measurement, change, and development of social attitudes; interpersonal relationships; group dynamics; and social problems. Same as Psychology 212.

Sociology 215N. Social Problems

Off-campus course. Interim. On demand by a minimum of twelve students. Credit, four hours. Prerequisite: Sociology 101 or permission of instructor. This seminar in social problems includes outside readings and discussions once a week for eight weeks during the fall semester. During January, ten days of intensive sessions are held in Atlanta, with observations in prisons, courts, hospitals, and other agencies dealing with social problems.

Sociology 230. Sociological Aspects of Health and Illness

Spring. On demand. Credit, four hours. Prerequisite: Sociology 101 or permission of instructor. The sociological factors affecting health and the organization of health care. The medical care services and professionals as social institutions; social history of health; environmental sources of disease; mental health; and effects of technology on health care.

Sociology 348. Old People in Society

Fall. On demand. Credit, four hours. Prerequisite: Sociology 101 or one 100-level psychology course. Study of the aged population and the aging process from psychological and sociological perspectives. Includes current gerontological theories, selected problems of old people, and applications of social-psychological theories to adjustment of the aged.

Sociology 389R. Special Topics in Sociology

On demand. Credit, four hours. Prerequisites: Sociology 101 and permission of instructor and chair of the History and Social Sciences Division. Seminar in selected topics of sociology. May be repeated for credit when topic varies.

Sociology 397R. Directed Study

On demand. Variable credit. Prerequisites: Sociology 101, two other sociology courses, and permission of instructor. Independent reading and research under the direction of a faculty member. This course does not satisfy distribution requirements in history and social sciences.

WOMEN'S STUDIES/SOCIAL SCIENCES

Women's Studies 103/Social Sciences 103. Introduction to Women's Studies

Fall. Credit, four hours. Introduction to the study of women and gender from the perspective of the social sciences, with special attention given to gender as a system of social classification in work, communities, and politics; and to women's identities and roles within and among states, classes, and races.





Trustees, Administration, and Faculty

Trustees of the University

Bradley Currey, Jr., *Chair*
L. Bevel Jones, *Vice Chair*
Catherine E. Rudder, *Secretary*

Trustees

J. David Allen
Marvin S. Arrington
Linton H. Bishop, Jr.
Arthur M. Blank
Henry L. Bowden, Jr.
J. Coleman Budd
James B. Carson
Thomas G. Cousins
James L. Ferman, Jr.
Anne Elizabeth Gaston
Charles B. Ginden
Roberto C. Goizueta
T. Marshall Hahn, Jr.
Laura Jones Hardman
G. Conley Ingram
Howard M. Jenkins
Frank C. Jones
William N. Kelley
J. Lloyd Knox
Clay F. Lee, Sr.
Alonzo L. McDonald, Jr.
Rebecca C. McGreevy
John W. McIntyre
Robert C. Morgan
Sam Nunn
William C. O'Kelley
William A. Parker, Jr.
Warren W. Quillian II
R. Randall Rollins
Robert W. Scherer
J. Ben Shapiro, Jr.
Ben J. Tarbutton, Jr.
William C. Warren III
James B. Williams

Emeritus Trustees

Paul H. Anderson, Sr.
Embree H. Blackard
Henry L. Bowden
William R. Bowdoin
Harlee Branch, Jr.
D. W. Brooks
William R. Cannon
Roy C. Clark
George S. Craft
R. Howard Dobbs, Jr.
Ernest A. Fitzgerald
Paul Hardin, Jr.
William H. Hightower, Jr.
Earl G. Hunt, Jr.
Boisfeuillet Jones
Joel D. McDavid
Mary Lynn Morgan
Ernest W. Newman
Erle Phillips
J. William Robinson
Carl J. Sanders
Roy H. Short
James M. Sibley
Edward D. Smith
Mack B. Stokes
Randolph W. Thrower
William B. Turner
Emory Williams
James H. Williams
Thomas R. Williams
James H. Wilson, Jr.

Emory University Administration

William M. Chace
President

James T. Laney
President Emeritus

Sanford S. Atwood
President Emeritus

Billy E. Frye
*Vice President for Academic Affairs
and Provost*

John L. Temple
Executive Vice President

Charles R. Hatcher, Jr.
*Vice President for Health Affairs and
Director, Robert W. Woodruff Health
Sciences Center*

David Bright
*Vice President for Arts and Sciences and
Dean of Emory College*

Robert E. Williams
Vice President for Business

Frank H. Huff
Vice President for Finance and Treasurer

William H. Fox
Vice President for Institutional Advancement

Frances Lucas-Tauchar
Vice President and Dean for Campus Life

Joseph W. Crooks
Vice President and General Counsel

Gary S. Hauk
*Secretary of the University and
Assistant Secretary to the Board of Trustees*

Principal Administrators of Oxford College

William H. Murdy
Dean

Kent B. Linville
Associate Dean for Academic Affairs

Joseph C. Moon
Associate Dean for Campus Life

Mary T. Cohen
Academic Coordinator

Eugene R. Davis
Director of Physical Plant

B. David Rowe
Director of Development

Mary Kathryn McNeill
Librarian

Jennifer B. Taylor
*Director of Admission and
Financial Aid*

Don J. Wood
Business Manager

Samuel M. Clark, Jr.
Chaplain

Board of Counselors

The Board of Counselors for Oxford College of Emory University had its original meeting on June 4, 1971. The purpose of this group of alumni and friends is "to receive information about the college and to consult with the dean and other officers. The board is asked to help interpret the program and objectives of Oxford College, to bring to the officers of the college a reflection of opinions that will help guide the college, and to share ideas concerning resources development for the college. The overall objective is to improve and increase the service of Oxford College."

Executive Committee

Carroll E. Eddleman '70

Chair, Auburn

Henry A. Mann '62

Immediate Past Chair, Atlanta

John Bostwick III '62

Vice Chair, Atlanta

H. Dean Minor '38

Secretary, Decatur

William H. Hurdle, Sr., '49, *Macon*

Horace J. Johnson, Jr., '77, *Covington*

Diane Allgood Kirby '67, *Dalton*

Bishop James Lloyd Knox, *Atlanta*

Wallace C. Lail '59, *Duluth*

Bert Lance, *Calhoun*

Johnny Maloney, *Covington*

Donna Miller '71, *Valdosta*

Dutton M. Miller '71, *Valdosta*

J. William Moncrief, *Clinton, South Carolina*

Dan C. Moore '35, *Oxford*

Virlyn B. Moore, Jr., *Atlanta*

William H. Murdy, *Oxford*

William B. Nipper, Jr., '69

Jacksonville, Florida

William L. Norton, Jr., '42, *Gainesville*

Tommy L. Owens '59, *Atlanta*

Robert G. Pennington '74, *Atlanta*

Gilbert L. Ramsey '46, *Columbus*

Vann Roberts '59, *Dalton*

John W. Robitscher '81, *Athens*

B. David Rowe, *Decatur*

James H. Segars '49, *Knoxville, Tennessee*

Claude Sitton '47, *Oxford*

Christopher D. Smith '95

Springfield, Missouri

Kyle D. Smith, Jr., '59, *Calhoun*

Hugh M. Tarbutton '52, *Sandersville*

Ina L. Thompson '61, *Atlanta*

Kim Wilder-Dyer '78, *Marietta*

George L. Zorn, Jr., '62

Birmingham, Alabama

Members

Ellen A. Bailey, *Decatur*

Clifford A. Bell '46, *Sandersville*

Russell W. Boozer '75, *Atlanta*

Bishop William R. Cannon, *Atlanta*

Albert E. Clarke '55, *Atlanta*

Pierce L. Cline '47, *Social Circle*

Cheryl Fisher Custer '81, *Conyers*

Fred C. Davison '48, *Augusta*

Gordon L. Dickens III '73, *Roswell*

Robert Trulock Dickson '72

Kinston, North Carolina

Denny M. Dobbs '65, *Covington*

J. Joseph Edwards '54, *Barnesville*

Jean Renfroe Eickhoff '66, *Decatur*

Arthur F. Evans '68, *Oviedo, Florida*

N. Bond Fleming, *Oxford*

R. Dean Fowler '55, *Montezuma*

Robert R. Fowler III, *Covington*

Thomas W. Gilmore, Jr., '48, *Sandersville*

W. Marvin Hardy III '61, *Orlando, Florida*

Doris Hinton, *Newborn*

A. Joseph Hopkins III '72, *Folkston*

Norman G. Houston III '62

Nashville

Caroline Candler Hunt '37, *Madison*

Faculty

Monica M. Ali

Associate Professor of Chemistry. A.B., Emmanuel College, 1963; M.S., Georgetown University, 1968, Ph.D., 1971; B.S. R.Ph., University of Georgia, 1991.

Kenneth H. Anderson

Visiting Assistant Professor of Philosophy. B.A., Bucknell University, 1982; M.A., Emory University, 1989, Ph.D., 1991.

Maria A. Archetto

Assistant Professor of Music. B.S., Rhode Island College, 1974; M.A., Eastman School of Music, University of Rochester, 1979, Ph.D., 1991.

Evelyn C. Bailey

Associate Professor of Mathematics. B.A., Emory University, 1970, M.A.T., 1973; Ed.S., Georgia State University, 1975, Ph.D., 1978.

Robert Edward Bailey

Associate Professor of Mathematics. B.S., Georgia Southern College, 1970; M.Ed., Armstrong-Savannah State College, 1975; M.S., Georgia State University, 1980, Ph.D., 1982.

William E. Baird

Associate Professor of Physics. B.A., Emory University, 1969; M.S., Georgia Institute of Technology, 1972, Ph.D., 1975, M.S., 1983.

Steven C. Baker

Assistant Professor of Biology. B.S., Tennessee Tech University, 1980, M.S., 1983; Ph.D., Southern Illinois University, 1990.

Lucas Carpenter

Professor of English. B.S., College of Charleston, 1968; M.A., University of North Carolina at Chapel Hill, 1973; Ph.D., State University of New York at Stony Brook, 1982.

Jimmy Carter

University Distinguished Professor. B.S., United States Naval Academy, 1946; L.L.D., Emory University, 1979.

Kenneth E. Carter

Assistant Professor of Psychology. B.A., Emory University, 1989; M.A., University of Michigan, 1990, Ph.D., 1993.

M. Eloise Brown Carter

Associate Professor of Biology. A.B., Wesleyan College, 1972; M.S., Emory University, 1978, Ph.D., 1983.

Brenda M. Cashin

Visiting Assistant Professor of Chemistry. B.S., University College, Galway, Ireland, 1985, Ph.D., 1989.

William B. Cody

Associate Professor of Political Science. A.B., University of Georgia, 1971, M.A., 1973; Ph.D., New School for Social Research, 1980; J.D., University of Georgia School of Law, 1986.

Mary T. Cohen

Academic Coordinator and Instructor in Chemistry. A.B., Emory University, 1957, M.S., 1958.

Charles R. Darracott III

Assistant Professor of Physical Education and Dance. B.S., Wake Forest University, 1978, M.A., 1980; Ed.D., University of Georgia, 1992.

Gayle Doherty

Assistant Professor of Physical Education and Dance. B.S., Florida State University, 1978, M.F.A., 1984.

Penelope England

Professor of Physical Education and Dance. B.S.Ed., University of Georgia, 1966, M.S.Ed., 1969; Ph.D., Louisiana State University, 1983.

Myra Frady

Instructor in Mathematics. B.S., Georgia State University, 1983, M.S., 1988.

Martha Judith Greer

Professor of Physical Education and Dance. A.B., LaGrange College, 1957; M.Ed., Auburn University, 1961; Ed.D., University of Georgia, 1972.

Stephen W. Henderson

Associate Professor of Geology. B.S., Indiana University, 1970, A.M., 1974; Ph.D., University of Georgia, 1984.

David W. Leinweber

Assistant Professor of History. B.A., Spring Arbor College, 1987; M.A., Michigan State University, 1989, Ph.D., 1992.

Clark W. Lemons

Associate Professor of English. B.A., Oklahoma City University, 1969; M.Div., Union Theological Seminary, 1972; M.A., Emory University, 1974, Ph.D., 1978.

Sharon A. Lewis

Associate Professor of Psychology. B.A., St. Mary's College, 1976; M.S., University of Georgia, 1981, Ph.D., 1985.

Kent B. Linville

Associate Dean for Academic Affairs and Professor of Philosophy. B.A., California State University/Northridge, 1967; Ph.D., University of California/Santa Barbara, 1972.

William P. McKibben

Professor of Mathematics. B.S., Georgia Institute of Technology, 1961, M.S., 1963, Ph.D., 1973.

Michael M. McQuaide

Associate Professor of Sociology. B.A., Florida State University, 1973; M.A., Pennsylvania State University, 1976, Ph.D., 1979.

Frank L. Maddox

Assistant Professor of Economics. B.S., Georgia Southern University, 1978; M.S., University of Georgia, 1981; Ph.D., Georgia State University, 1992.

Matthew W. Morris

Associate Professor of Humanities. B.A., University of Georgia, 1966, M.A., 1972, Ph.D., 1977.

William H. Murdy

Dean and Candler Professor of Biology. B.S., University of Massachusetts, 1956; Ph.D., Washington University, 1959.

Delia Nisbet

Assistant Professor of German. M.A., Georgia State University, 1987; Ph.D., Emory University, 1992.

Hoyt P. Oliver

Pierce Professor of Religion. B.A., Emory University, 1956; S.T.B., Boston University, 1962; Ph.D., Yale University, 1966.

Patricia L. Owen-Smith

Associate Professor of Psychology. A.B., University of Georgia, 1969, M.Ed., 1970; Ph.D., Georgia State University, 1985.

Lloyd R. Parker, Jr.

Associate Professor of Chemistry. B.A., Berry College, 1972; M.S., Emory University, 1974; Ph.D., University of Houston, 1978.

Neil S. Penn

Professor of History. A.B., West Virginia Wesleyan College, 1954; M.A., Duke University, 1958; Ph.D., Emory University, 1973.

Susan B. Riner

Special Lecturer in Mathematics. B.A., Georgia State University, 1971, M.A.T., 1973.

Michael K. Rogers

Assistant Professor of Mathematics. B.A., Reed College, 1985; M.A., Columbia University, 1986, Ph.D., 1991.

Reza Saadein

Associate Professor of Chemistry. B.S., University of Shiraz, 1976, M.S., 1978; Ph.D., Syracuse University, 1984.

Maureen E. St. Laurent

Assistant Professor of English. B.A., Providence College, 1985; M.A., Vanderbilt University, 1987, Ph.D., 1992.

Gretchen E. Schulz

Associate Professor of Humanities. B.A., Wellesley College, 1964; M.A., University of Wisconsin, 1965, Ph.D., 1975.

William Shapiro

Professor of Political Science. B.A., Brooklyn College, 1968; M.A., Cornell University, 1973, Ph.D., 1978.

Richard T. Shappell

Professor of Physical Education and Dance. B.S., West Chester State College, 1964; M.A., Ball State University, 1966; Ph.D., Florida State University, 1977.

Homer F. Sharp, Jr.

Professor of Biology. B.A., Emory University, 1959; M.S., University of Georgia, 1962, Ph.D., 1970.

William H. Sullivan

Visiting Assistant Professor of English. B.A., University of Alabama, 1961; M.A., Northwestern University, 1963; Ph.D., University of Wisconsin, 1969.

Theodosia R. Wade

Biology Lab Coordinator. B.S., Presbyterian College, 1976; M.A.C.T., Auburn University, 1980.

James M. Warburton

Associate Professor of Spanish. A.B., Middlebury College, 1962, M.A., 1967; Ph.D., Emory University, 1973.

Ina Jane Wundram

Associate Professor of Anthropology. B.A., Emory University, 1962, M.S., 1964, Ph.D., 1966; M.A., Portland State University, 1973.

Faculty Emeriti

Andrew L. Autry

Associate Professor of Chemistry. B.S., University of Georgia, 1956, M.S., 1958.

Theodore E. Davis

Associate Professor of History. A.B., Centre College, 1952; M.Div., Princeton University, 1958; M.A., University of Virginia, 1964.

Marshall R. Elizer

Professor of Mathematics. A.B., Mercer University, 1934; M.A., University of Georgia, 1940.

Neal Bond Fleming

Dean and Division Executive. B.A., Emory University, 1933, B.D., 1936; S.T.M., Boston University, 1937, Ph.D., 1941.

John W. Gregory

Professor of Humanities. A.B., Mercer University, 1938; M.A., University of Georgia, 1947; Ed.S., George Peabody College, 1955.

Joseph Edwin Guillebeau, Jr.

Professor of Humanities. A.B., University of North Carolina, 1947; M.A., State University of Iowa, 1950, Ph.D., 1951.

Curry T. Haynes

Professor of Biology. A.B., Howard College, 1924; M.A., Wake Forest University, 1930.

A. W. Jackson

Professor of Physics. B.S., Louisiana State University, 1925, M.S., 1938.

Dan C. Moore

Professor of Physics and Mathematics. B.A., Emory University, 1937, M.A., 1940.

Staff

Rhonda Avery

Accounting Clerk, Business Office

Marvlyn Bankston

Assistant to the Director of Development

Mary Barnes

Secretary, Development

Barbara Behanna

Security Officer

Judy Bir

Residence Life Secretary

Jim Brown

Computer Support Coordinator

Joy Budensiek

Faculty Secretary

Claude T. Burns

Security Officer

Seth Bussey

Director of Recreational Programs

Tammy Camfield

Assistant Director of Admission

Ann Cargile

Assistant to the Registrar

Janice Carter

Bookstore Manager

Betty Claire Clark

Multimedia Lab Supervisor

Jena Clark

Bookstore Cashier

Reta Cobb

Secretary to the Associate Dean
for Campus Life

Sheilah Conner

Executive Secretary to the Dean

Debbie Cowan

Accounting Clerk, Library

Henry Crews

Landscaper

Anne Crudup

Library Associate

Mellie Davis

Alumni Secretary

Woodrow Davis

Security Officer

Alexa DeVetter

Secretary, Registrar's Office

Shawn Devine

Assistant Director, Residence Life

Terry Elam

Director of Student Activities

Katherine Horton Ellis

Assistant Director, Residence Life

Debra Eunice

Secretary to the Coordinator
of Student Development

Rebecca Floyd

Admission Adviser

Faye Fuller

Lead Accounting Clerk, Business Office

Gail Garrett

Financial Aid Secretary

Muree Geiger

Receptionist

William Hailey

Security Officer

Beth Matthews Haines

Assistant Librarian

Eugene Heard

Maintenance Mechanic

Jennifer Howard

Library Associate

Oliver Jackson

Security Officer

78 / TRUSTEES, ADMINISTRATION, AND FACULTY

Arthur Jeffries
Maintenance Mechanic

Ursula Kaminski
Receptionist

Samuel Kendrick
Security Officer

Juanita P. Kitchens
Secretary to Director of Admission

Rosemary Kriner
Director of Student Health Service

Kim Krinsky
Director of Counseling

Susan Laird
Staff Psychologist

Patsy McDonald
Security Officer

Linda McLeod
Admission Secretary

Cynthia Millsaps
Library Associate

Alan Mitchell
Maintenance Mechanic

Maddie Monahan
Associate Director of Admission

Edythe Nesmith
Coordinator of Student Development

James Nuckles
Assistant Supervisor, Housing Maintenance

Julia Perreault
Associate Director of Admission

Gloria Rigney
Secretary to the Associate Dean
and Faculty Secretary

Drake Sammons
Housing Maintenance

Scott Sammons
Security Officer

Charles Savage
Security Officer

Eleanor Scarborough
Receptionist

Scott Searcy
Residence Life Coordinator

Melissa Shrader
Faculty Secretary

Judy Skinner
Accounting Clerk, Business Office

Renee Snyder
Director of Residence Life

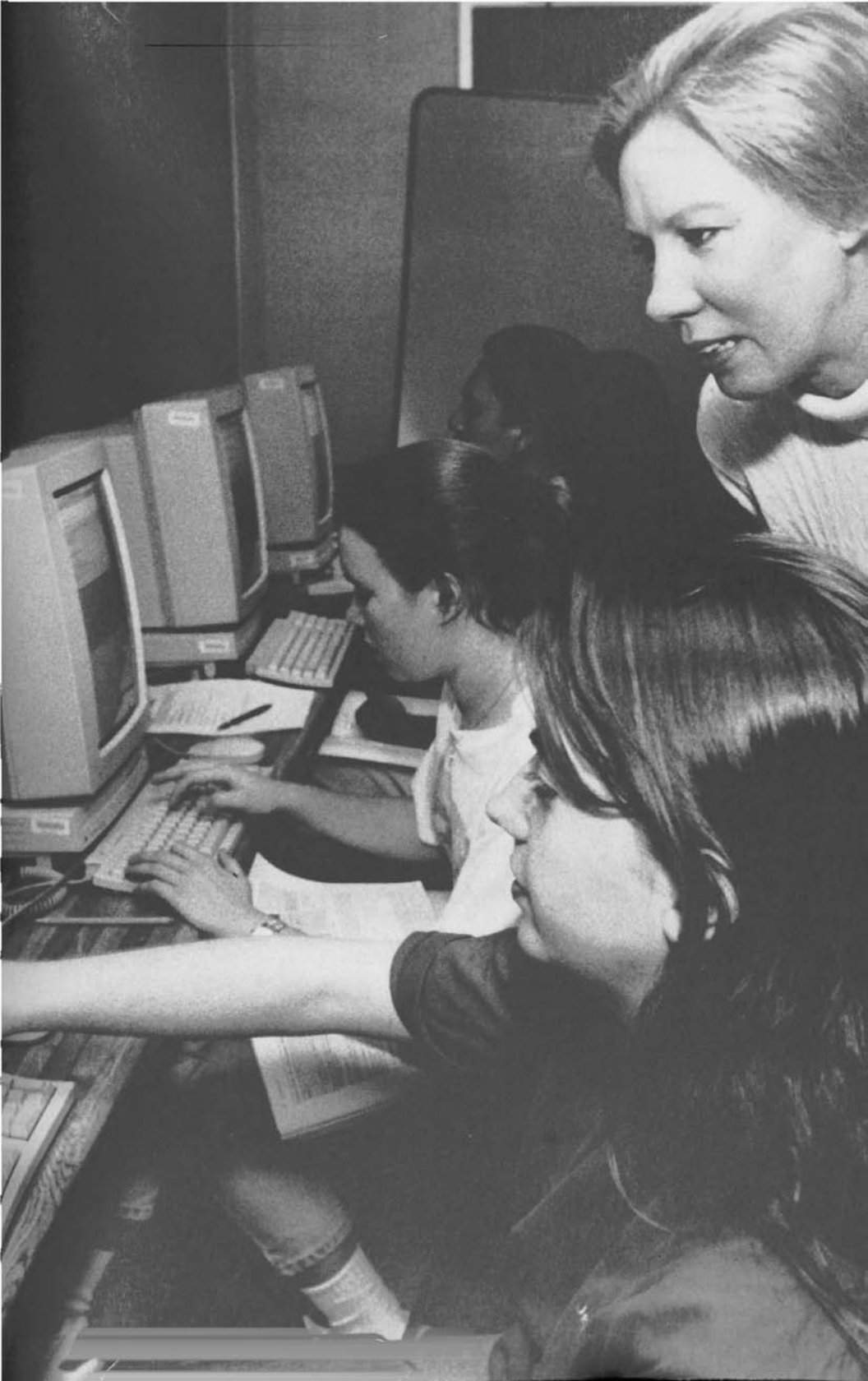
George Sullivan
Security Officer

Robert S. Walker
Director of Public Safety

Randolph Weemes
Security Officer

Eugene Williams
Security Officer

Georgene Wykoff
Secretary for Health Service



Academic Calendar

Fall Semester 1995

August 18–22 Friday–Tuesday	Freshman Orientation
August 21–22 Monday, Tuesday	Registration of returning students \$25 late fee after this date
August 21–22 Monday, Tuesday	Registration of new students
August 23 Wednesday	Classes begin
August 29 Tuesday	Last day for changing courses
September 4 Monday	Labor Day holiday
September 27 Wednesday	Last day for dropping courses without academic penalty
October 5–6 Thursday, Friday	Midsemester break
October 11 Wednesday	Midterm reports due in the Office of Records and Registration
October 23–27 Monday–Friday	Preregistration for spring semester
November 22–24 Wednesday–Friday	Thanksgiving recess
December 4–5 Monday, Tuesday	Physical Education exam on last day of class
December 5 Tuesday	Classes end
December 6 Wednesday	Reading Day
December 7, 8, 11–13 Thursday, Friday Monday–Wednesday	Final exams

Interim Term 1996

December 14, 1995 to January 12, 1996

Spring Semester 1996

January 15 Monday	Martin Luther King, Jr., holiday
January 16 Tuesday	Registration
January 17 Wednesday	Classes begin
January 23 Tuesday	Last day for changing courses
February 20 Tuesday	Last day for dropping courses without academic penalty
March 11–15 Monday–Friday	Spring recess
March 20 Wednesday	Midterm reports due in Office of Records and Registration
April 1–5 Monday–Friday	Preregistration for fall semester
April 29–30 Monday, Tuesday	Physical Education exam on last day of class
April 30 Tuesday	Classes end
May 1 Wednesday	Reading day
May 2–3, 6–8 Thursday, Friday, Monday–Wednesday	Final exams
May 11 Saturday	Commencement

Summer Term 1996

TERM I

May 20
Monday

Registration

May 21
Tuesday

Classes begin

May 27
Monday

Memorial Day holiday

June 27–28
Thursday, Friday

Exams

TERM II

July 1
Monday

Registration

July 2
Tuesday

Classes begin

July 4
Thursday

Independence Day holiday

August 8–9
Thursday, Friday

Exams

Fall Semester 1996

August 23–27 Friday–Tuesday	Freshman Orientation
August 26–27 Monday, Tuesday	Registration of returning students \$25 late fee after this date
August 26–27 Monday, Tuesday	Registration of new students
August 28 Wednesday	Classes begin
September 2 Monday	Labor Day holiday
September 4 Wednesday	Last day for changing courses
October 2 Wednesday	Last day for dropping courses without academic penalty
October 14–15 Monday, Tuesday	Midsemester break
October 16 Wednesday	Midterm reports due in the Office of Records and Registration
Oct. 28–Nov. 1 Monday–Friday	Preregistration for spring semester
November 27–29 Wednesday–Friday	Thanksgiving recess
December 9–10 Monday, Tuesday	Physical Education exam on last day of class
December 10 Tuesday	Classes end
December 11 Wednesday	Reading Day
December 12, 13, 16–18 Thursday, Friday, Monday–Wednesday	Final exams

Interim Term 1997

December 19, 1996 to January 12, 1997

Spring Semester 1997

January 13 Monday	Registration
January 14 Tuesday	Classes begin
January 20 Monday	Martin Luther King, Jr., holiday
January 21 Tuesday	Last day for changing courses
February 11 Tuesday	Last day for dropping courses without academic penalty
March 10–14 Monday–Friday	Spring recess
March 19 Wednesday	Midterm reports due in Office of Records and Registration
March 31–April 4 Monday–Friday	Preregistration for fall semester
April 28, 29 Monday, Tuesday	Physical Education exam on last day of class
April 29 Tuesday	Classes end
April 30 Wednesday	Reading day
May 1, 2, 5–7 Thursday, Friday, Monday–Wednesday	Final exams
May 10 Saturday	Commencement

Summer Term 1997

TERM I

May 19
Monday

Registration

May 20
Tuesday

Classes begin

May 26
Monday

Memorial Day holiday

June 26–27
Thursday, Friday

Exams

TERM II

June 30
Monday

Registration

July 1
Tuesday

Classes begin

July 4
Friday

Independence Day holiday

August 7–8
Thursday, Friday

Exams

Index

Academic advisers	27	Continuation requirements	33,34
Academic honors.....	26	(Oxford College)	
Academic probation	33	Costs	11
Academic programs	21	Counseling Center	18
Accelerated degree programs	8	Course descriptions.....	47
Accelerated master's program	22	Course load requirements.....	24
Accessibility.....	3	Dean's list (Honor, Merit)	26
Accreditation.....	3	Degree requirements.....	25
Adding courses	40	Dentistry	23
Administration	72	Discriminatory harassment.....	43-44
Admission	7	Dismissal	42
Admission decisions	7	Distribution requirements	25
Admission requirements.....	7	Dormitory cost	11
Advanced placement.....	8	Dropping courses	40-41
Advising.....	27	Early accept. to medical school.....	22
Allied health professions.....	23	Early admission	7
Alpha Epsilon Upsilon	27	Early decision plan	7
Anthropology	63	Economics.....	64-65
Appeals	43	Educational resources	29
Application procedure.....	7	Emory College	31-32
Aquatics.....	61	(continuation requirements)	
Art history	47	Emory College courses.....	41
Astronomy	54	Emory University.....	4
Auditing courses	41	Employment (student)	17
Bachelor of arts.....	21	Engineering.....	24
Bachelor of science.....	21	English	47-49
Biology	55	Exclusion.....	34
Board plan.....	11	Expenses.....	11
Business.....	66	Faculty.....	74-76
Business administration	22	Financial assistance	11-12
Calendar	80	Financial information.....	11
Cancellation	42	French.....	49-50
Changing courses.....	40	Geology.....	57
Chemistry	56	German	50-51
Class attendance.....	33	Grading system	32
Combined degree programs	21	Graduation requirements	31
Computer facilities	29	Health/fitness.....	60-61
Computer science	58	Health services	18
Conduct code	34	History	65-66
Continuation requirements.....	31-32	History division	63
(Emory College)		Honor code	38-39

Honor list.....	26	Readmission.....	9
Humanities	51	Refunds	17
Humanities division	47	Regulations	31
Incomplete work.....	32	Religion.....	53
Insurance.....	18	Repetition of courses	41
International baccalaureate.....	8	Report of grades	33
Involuntary withdrawal	42	Residence halls	11
Italian.....	51–52	Residence requirements.....	11
Joint enrollment	8	Room and board	11
Law.....	24	Room cost.....	11
Libraries	29	Scholarships.....	12–17
Lifetime activities	62–63	Social sciences division	63
Loans.....	17	Sociology.....	68
Mathematics	58–59	Spanish	53–54
Mathematics division	54	Staff.....	77–78
Meal plan.....	11	Student health service.....	17
Medicine	24	Student insurance.....	18
Merit list	26	Summer school	21
Microbiology.....	26	Theology	24
Minors.....	21	Transcripts	41
Mission statement.....	3	Transfer applicants	8
Music.....	52	Transfer credit	9
Natural science division	54	Transient study	9
Nursing	23	Trustees.....	71
Off-campus courses	26	Tuition, fees.....	11
Orientation	9	Tuition refunds.....	41
Oxford College profile.....	3	University-student relationships	44
Oxford studies.....	26	Vehicles on campus.....	43
Parking.....	43	Veterans' benefits	17
Pharmacy	24	Veterinary medicine.....	24
Philosophy	52–53	Withdrawing from courses	40–41
Phi Theta Kappa.....	27	Withdrawing from school.....	42
Physical education division.....	60	Women's studies/social sciences.....	68
Physical examination	8	Work/study	17
Physics.....	57–58		
Pierce Program in Religion	27		
Political science.....	66–67		
Probation	33		
Program of study	3		
Psychology	67		
Quality points.....	32		

Notes



OXFORD COLLEGE
OF EMORY UNIVERSITY